

UFD1L Antibody
Rabbit mAb
Catalog # AP92999**Specification**

UFD1L Antibody - Product Information

Application	WB, FC, ICC
Primary Accession	O92890
Reactivity	Rat
Clonality	Monoclonal
Other Names	
UB fusion protein 1; UFD1; UFD1L;	

Isotype	Rabbit IgG
Host	Rabbit
Calculated MW	34500 Da

UFD1L Antibody - Additional Information

Dilution	WB~~1:1000 FC~~1:10~50 ICC~~N/A
Purification	Affinity-chromatography
Immunogen	A synthesized peptide derived from human UFD1L
Description	Essential component of the ubiquitin-dependent proteolytic pathway which degrades ubiquitin fusion proteins. The ternary complex containing UFD1L, VCP and NPLOC4 binds ubiquitinated proteins and is necessary for the export of misfolded proteins from the ER to the cytoplasm, where they are degraded by the proteasome.
Storage Condition and Buffer	Rabbit IgG in phosphate buffered saline , pH 7.4, 150mM NaCl, 0.02% sodium azide and 50% glycerol. Store at +4°C short term. Store at -20°C long term. Avoid freeze / thaw cycle.

UFD1L Antibody - Protein Information**Name** UFD1 ([HGNC:12520](#))**Synonyms** UFD1L**Function**

Essential component of the ubiquitin-dependent proteolytic pathway which degrades ubiquitin fusion proteins. The ternary complex containing UFD1, VCP and NPLOC4 binds ubiquitinated

proteins and is necessary for the export of misfolded proteins from the ER to the cytoplasm, where they are degraded by the proteasome. The NPLOC4-UFD1- VCP complex regulates spindle disassembly at the end of mitosis and is necessary for the formation of a closed nuclear envelope. It may be involved in the development of some ectoderm-derived structures (By similarity). Acts as a negative regulator of type I interferon production via the complex formed with VCP and NPLOC4, which binds to RIGI and recruits RNF125 to promote ubiquitination and degradation of RIGI (PubMed:26471729).

Cellular Location

Nucleus {ECO:0000250|UniProtKB:Q9ES53}. Cytoplasm, cytosol {ECO:0000250|UniProtKB:Q9ES53}

Tissue Location

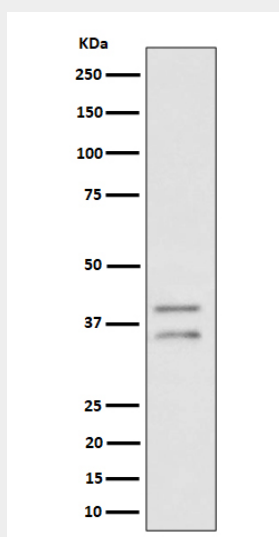
Found in adult heart, skeletal muscle and pancreas, and in fetal liver and kidney

UFD1L Antibody - Protocols

Provided below are standard protocols that you may find useful for product applications.

- [Western Blot](#)
- [Blocking Peptides](#)
- [Dot Blot](#)
- [Immunohistochemistry](#)
- [Immunofluorescence](#)
- [Immunoprecipitation](#)
- [Flow Cytometry](#)
- [Cell Culture](#)

UFD1L Antibody - Images



Western blot analysis of UFD1L expression in HeLa cell lysate.