

PTPRR Antibody
Rabbit mAb
Catalog # AP93003**Specification**

PTPRR Antibody - Product Information

Application	WB, IHC
Primary Accession	Q15256
Reactivity	Rat
Clonality	Monoclonal
Other Names	
ECPTP; NC PTPCOM1; PTPBR7; PTPRQ; PTPRR; PTPSL; Receptor type tyrosine protein phosphatase R;	
Isotype	Rabbit IgG
Host	Rabbit
Calculated MW	73834 Da

PTPRR Antibody - Additional Information

Dilution	WB~~1:1000 IHC~~1:100~500
Purification	Affinity-chromatography
Immunogen	A synthesized peptide derived from human PTPRR
Description	Sequesters mitogen-activated protein kinases (MAPKs) such as MAPK1, MAPK3 and MAPK14 in the cytoplasm in an inactive form. The MAPKs bind to a dephosphorylated kinase interacting motif, phosphorylation of which by the protein kinase A complex releases the MAPKs for activation and translocation into the nucleus.
Storage Condition and Buffer	Rabbit IgG in phosphate buffered saline , pH 7.4, 150mM NaCl, 0.02% sodium azide and 50% glycerol. Store at +4°C short term. Store at -20°C long term. Avoid freeze / thaw cycle.

PTPRR Antibody - Protein Information**Name** PTPRR**Synonyms** ECPTP, PTPRQ**Function**

Sequesters mitogen-activated protein kinases (MAPKs) such as MAPK1, MAPK3 and MAPK14 in the cytoplasm in an inactive form. The MAPKs bind to a dephosphorylated kinase interacting motif,

phosphorylation of which by the protein kinase A complex releases the MAPKs for activation and translocation into the nucleus (By similarity).

Cellular Location

Secreted. [Isoform Delta]: Cytoplasm, perinuclear region. Note=Locates to the perinuclear areas within the cytoplasm

Tissue Location

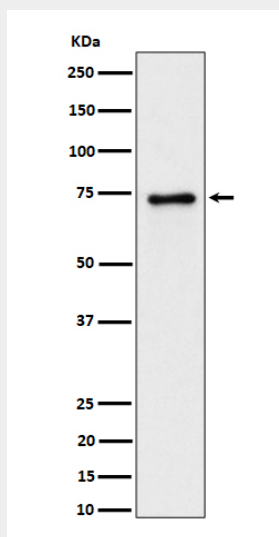
Detected in cerebrospinal fluid (at protein level) (PubMed:25326458). Expressed in brain, placenta, small intestine, stomach, uterus and weakly in the prostate. Isoform alpha has been observed only in the brain. Isoform gamma is expressed in brain, placenta and uterus. Isoform delta is expressed in brain, kidney, placenta, prostate, small intestine and uterus

PTPRR Antibody - Protocols

Provided below are standard protocols that you may find useful for product applications.

- [Western Blot](#)
- [Blocking Peptides](#)
- [Dot Blot](#)
- [Immunohistochemistry](#)
- [Immunofluorescence](#)
- [Immunoprecipitation](#)
- [Flow Cytometry](#)
- [Cell Culture](#)

PTPRR Antibody - Images



Western blot analysis of PTPRR expression in mouse brain lysate.