

PPP2R5D Antibody
Rabbit mAb
Catalog # AP93011**Specification**

PPP2R5D Antibody - Product Information

Application	WB, IHC, FC, ICC, IP
Primary Accession	Q14738
Reactivity	Rat
Clonality	Monoclonal
Other Names	
B56D; PPP2R5D; Tex271;	

Isotype	Rabbit IgG
Host	Rabbit
Calculated MW	69992 Da

PPP2R5D Antibody - Additional Information

Dilution	WB~~1:1000 IHC~~1:100~500 FC~~1:10~50 ICC~~N/A IP~~N/A
Purification	Affinity-chromatography
Immunogen	A synthesized peptide derived from human PPP2R5D
Description	The B regulatory subunit might modulate substrate selectivity and catalytic activity, and also might direct the localization of the catalytic enzyme to a particular subcellular compartment.
Storage Condition and Buffer	Rabbit IgG in phosphate buffered saline , pH 7.4, 150mM NaCl, 0.02% sodium azide and 50% glycerol. Store at +4°C short term. Store at -20°C long term. Avoid freeze / thaw cycle.

PPP2R5D Antibody - Protein Information**Name** PPP2R5D**Function**

The B regulatory subunit might modulate substrate selectivity and catalytic activity, and might also direct the localization of the catalytic enzyme to a particular subcellular compartment.

Cellular Location

Cytoplasm. Nucleus. Note=Nuclear in interphase, nuclear during mitosis

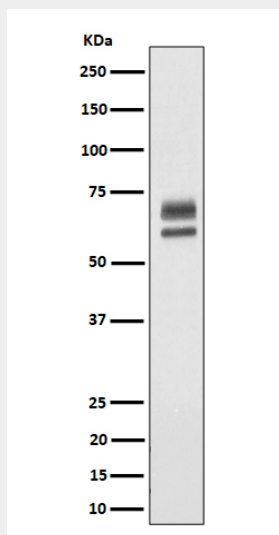
Tissue Location

Isoform Delta-2 is widely expressed. Isoform Delta- 1 is highly expressed in brain

PPP2R5D Antibody - Protocols

Provided below are standard protocols that you may find useful for product applications.

- [Western Blot](#)
- [Blocking Peptides](#)
- [Dot Blot](#)
- [Immunohistochemistry](#)
- [Immunofluorescence](#)
- [Immunoprecipitation](#)
- [Flow Cytometry](#)
- [Cell Culture](#)

PPP2R5D Antibody - Images

Western blot analysis of PPP2R5D expression in HeLa cell lysate.