

**SAFB Antibody**  
Rabbit mAb  
Catalog # AP93013

## Specification

---

### SAFB Antibody - Product Information

Application	WB, IHC, ICC
Primary Accession	<a href="#">Q15424</a>
Reactivity	Rat
Clonality	Monoclonal
<b>Other Names</b>	
HAP; HET; SAFB; SAFB1;	
Isotype	Rabbit IgG
Host	Rabbit
Calculated MW	102642 Da

### SAFB Antibody - Additional Information

Dilution	WB~~1:1000 IHC~~1:100~500 ICC~~N/A
Purification	Affinity-chromatography
Immunogen	A synthesized peptide derived from human SAFB
Description	Binds to scaffold/matrix attachment region (S/MAR) DNA and forms a molecular assembly point to allow the formation of a 'transcriptosomal' complex (consisting of SR proteins and RNA polymerase II) coupling transcription and RNA processing (By similarity). Can function as an estrogen receptor corepressor and can also bind to the HSP27 promoter and decrease its transcription. Can inhibit cell proliferation.
Storage Condition and Buffer	Rabbit IgG in phosphate buffered saline , pH 7.4, 150mM NaCl, 0.02% sodium azide and 50% glycerol. Store at +4°C short term. Store at -20°C long term. Avoid freeze / thaw cycle.

### SAFB Antibody - Protein Information

**Name** SAFB

**Synonyms** HAP, HET, SAFB1

#### **Function**

Binds to scaffold/matrix attachment region (S/MAR) DNA and forms a molecular assembly point to

allow the formation of a 'transcriptosomal' complex (consisting of SR proteins and RNA polymerase II) coupling transcription and RNA processing (PubMed:<a href="http://www.uniprot.org/citations/9671816" target="\_blank">9671816</a>). Functions as an estrogen receptor corepressor and can also bind to the HSP27 promoter and decrease its transcription (PubMed:<a href="http://www.uniprot.org/citations/12660241" target="\_blank">12660241</a>). Thereby acts as a negative regulator of cell proliferation (PubMed:<a href="http://www.uniprot.org/citations/12660241" target="\_blank">12660241</a>). When associated with RBMX, binds to and stimulates transcription from the SREBF1 promoter (By similarity).

### Cellular Location

Nucleus

### Tissue Location

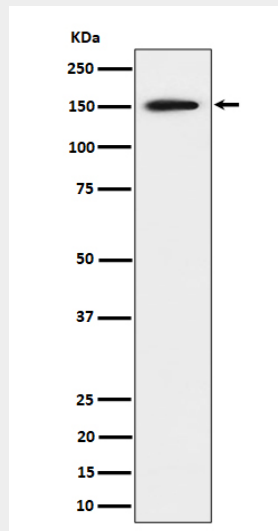
Ubiquitous. Expressed at high levels in the CNS and at low levels in the liver. Expressed in a wide number of breast cancer cell lines

### SAFB Antibody - Protocols

Provided below are standard protocols that you may find useful for product applications.

- [Western Blot](#)
- [Blocking Peptides](#)
- [Dot Blot](#)
- [Immunohistochemistry](#)
- [Immunofluorescence](#)
- [Immunoprecipitation](#)
- [Flow Cytometry](#)
- [Cell Culture](#)

### SAFB Antibody - Images



Western blot analysis of SAFB expression in 293 cell lysate.