

Phospho-p130(T986) Antibody
Rabbit mAb
Catalog # AP93014**Specification**

Phospho-p130(T986) Antibody - Product Information

Application	WB, IP
Primary Accession	<u>Q08999</u>
Clonality	Monoclonal
Other Names	
130 kDa retinoblastoma associated protein; IB4; p130; PRB2; Rb2; Rbl2; RBR2; Retinoblastoma like 2; Retinoblastoma-related protein 2; RIC128;	
Isotype	Rabbit IgG
Host	Rabbit
Calculated MW	128367 Da

Phospho-p130(T986) Antibody - Additional Information

Dilution	WB~~1:1000 IP~~N/A
Purification	Affinity-chromatography
Immunogen	A synthesized peptide derived from human Phospho-p130(T986)
Description	Key regulator of entry into cell division. Directly involved in heterochromatin formation by maintaining overall chromatin structure and, in particular, that of constitutive heterochromatin by stabilizing histone methylation.
Storage Condition and Buffer	Rabbit IgG in phosphate buffered saline , pH 7.4, 150mM NaCl, 0.02% sodium azide and 50% glycerol. Store at +4°C short term. Store at -20°C long term. Avoid freeze / thaw cycle.

Phospho-p130(T986) Antibody - Protein Information**Name** RBL2**Synonyms** RB2**Function**

Key regulator of entry into cell division. Directly involved in heterochromatin formation by maintaining overall chromatin structure and, in particular, that of constitutive heterochromatin by stabilizing histone methylation. Recruits and targets histone methyltransferases KMT5B and KMT5C, leading to epigenetic transcriptional repression. Controls histone H4 'Lys-20' trimethylation. Probably acts as a transcription repressor by recruiting chromatin-modifying enzymes to promoters. Potent inhibitor of E2F-mediated trans-activation, associates preferentially

with E2F5. Binds to cyclins A and E. Binds to and may be involved in the transforming capacity of the adenovirus E1A protein. May act as a tumor suppressor.

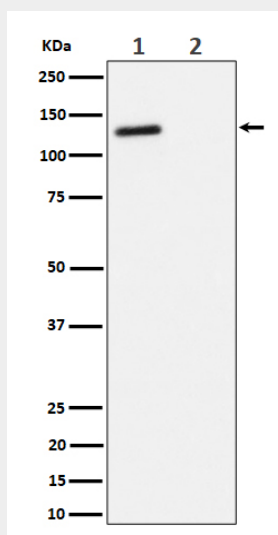
Cellular Location

Nucleus.

Phospho-p130(T986) Antibody - Protocols

Provided below are standard protocols that you may find useful for product applications.

- [Western Blot](#)
- [Blocking Peptides](#)
- [Dot Blot](#)
- [Immunohistochemistry](#)
- [Immunofluorescence](#)
- [Immunoprecipitation](#)
- [Flow Cytometry](#)
- [Cell Culture](#)

Phospho-p130(T986) Antibody - Images

Western blot analysis of Phospho-p130(T986) expression in (1) Jurkat cell lysate; (2) Jurkat cell treated with phosphatase lysate.