

Septin 8 Antibody
Rabbit mAb
Catalog # AP93018**Specification**

Septin 8 Antibody - Product Information

Application	WB, IHC, FC, ICC, IP
Primary Accession	O92599
Reactivity	Rat
Clonality	Monoclonal
Other Names	
SEP2; SEPT8; Septin8;	
Isotype	Rabbit IgG
Host	Rabbit
Calculated MW	55756 Da

Septin 8 Antibody - Additional Information

Dilution	WB~~1:1000 IHC~~1:100~500 FC~~1:10~50 ICC~~N/A IP~~N/A
Purification	Affinity-chromatography
Immunogen	A synthesized peptide derived from human Septin 8
Description	Septin 8 (SEPT8) is a member of the highly conserved septin family. Septins are 40- to 60-kD GTPases that assemble as filamentous scaffolds. They are involved in the organization of submembranous structures, in neuronal polarity, and in vesicle trafficking. There are 3 isoforms produced by alternative splicing.
Storage Condition and Buffer	Rabbit IgG in phosphate buffered saline , pH 7.4, 150mM NaCl, 0.02% sodium azide and 50% glycerol. Store at +4°C short term. Store at -20°C long term. Avoid freeze / thaw cycle.

Septin 8 Antibody - Protein Information**Name** SEPTIN8 ([HGNC:16511](#))**Function**

Filament-forming cytoskeletal GTPase (By similarity). May play a role in platelet secretion (PubMed:15116257). Seems to participate in the process of SNARE complex formation in synaptic vesicles (By

similarity).

Cellular Location

Cytoplasm {ECO:0000250|UniProtKB:B0BNF1}. Cytoplasm, cytoskeleton. Synapse {ECO:0000250|UniProtKB:B0BNF1}. Cell projection, axon {ECO:0000250|UniProtKB:B0BNF1}. Cytoplasmic vesicle, secretory vesicle, synaptic vesicle membrane {ECO:0000250|UniProtKB:B0BNF1}. Presynapse {ECO:0000250|UniProtKB:B0BNF1}. Note=Expressed in axons of immature neurons, localizes to synapses in mature neurons (By similarity). In platelets, found in areas surrounding alpha-granules (PubMed:15116257) {ECO:0000250|UniProtKB:B0BNF1, ECO:0000269|PubMed:15116257}

Tissue Location

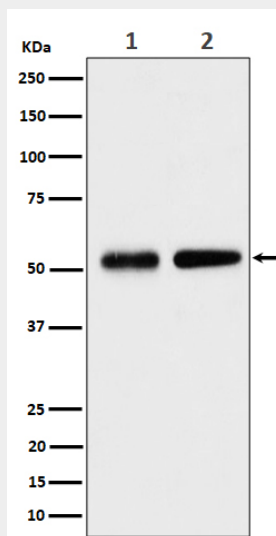
Widely expressed, including in brain, heart and platelets; most abundant in aorta. Isoform 2 is expressed at low levels in specific brain areas, such as occipital pole, frontal lobe, temporal lobe and putamen. Isoform 1 and 3 are highly expressed in specific brain areas, such as occipital pole, frontal lobe, temporal lobe and putamen. Isoform 2 is highly expressed in prostate, testis and ovary Isoform 1 and isoform 3 are expressed at low levels in prostate, testis and ovary.

Septin 8 Antibody - Protocols

Provided below are standard protocols that you may find useful for product applications.

- [Western Blot](#)
- [Blocking Peptides](#)
- [Dot Blot](#)
- [Immunohistochemistry](#)
- [Immunofluorescence](#)
- [Immunoprecipitation](#)
- [Flow Cytometry](#)
- [Cell Culture](#)

Septin 8 Antibody - Images



Western blot analysis of Septin 8 expression in (1) HeLa cell lysate; (2) NIH/3T3 cell lysate.