

**ACAP2 Antibody**  
Rabbit mAb  
Catalog # AP93022

## Specification

---

### ACAP2 Antibody - Product Information

Application	WB
Primary Accession	<a href="#">Q15057</a>
Reactivity	Rat
Clonality	Monoclonal
<b>Other Names</b>	
ACAP2; Centaurin beta2; CENTB2; Cntb2;	
Isotype	Rabbit IgG
Host	Rabbit
Calculated MW	88029 Da

### ACAP2 Antibody - Additional Information

Dilution	WB~~1:1000
Purification	Affinity-chromatography
Immunogen	A synthesized peptide derived from human ACAP2
Description	GTPase-activating protein (GAP) for ADP ribosylation factor 6 (ARF6).
Storage Condition and Buffer	Rabbit IgG in phosphate buffered saline , pH 7.4, 150mM NaCl, 0.02% sodium azide and 50% glycerol. Store at +4°C short term. Store at -20°C long term. Avoid freeze / thaw cycle.

### ACAP2 Antibody - Protein Information

**Name** ACAP2

**Synonyms** CENTB2, KIAA0041

#### Function

GTPase-activating protein (GAP) for ADP ribosylation factor 6 (ARF6). Doesn't show GAP activity for RAB35 (PubMed:<a href="http://www.uniprot.org/citations/30905672" target="\_blank">30905672</a>).

#### Cellular Location

Cell membrane. Endosome membrane; Peripheral membrane protein. Note=Colocalizes with RAB35 at the membrane protrusions of HEK293T cells.

#### Tissue Location

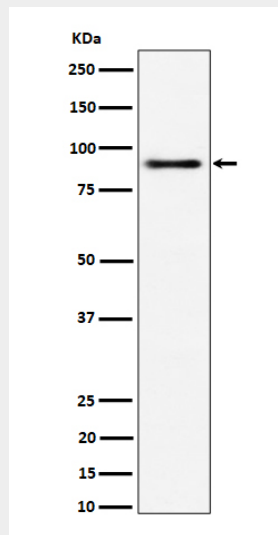
Widely expressed. Highest level in lung.

## ACAP2 Antibody - Protocols

Provided below are standard protocols that you may find useful for product applications.

- [Western Blot](#)
- [Blocking Peptides](#)
- [Dot Blot](#)
- [Immunohistochemistry](#)
- [Immunofluorescence](#)
- [Immunoprecipitation](#)
- [Flow Cytometry](#)
- [Cell Culture](#)

## ACAP2 Antibody - Images



Western blot analysis of ACAP2 expression in 293 cell lysate.