

PSMB10 Antibody
Rabbit mAb
Catalog # AP93029**Specification**

PSMB10 Antibody - Product Information

Application	WB, IHC
Primary Accession	P40306
Reactivity	Rat
Clonality	Monoclonal
Other Names	
LMP10; MECL1; Psmb10;	
Isotype	Rabbit IgG
Host	Rabbit
Calculated MW	28936 Da

PSMB10 Antibody - Additional Information

Dilution	WB~~1:1000 IHC~~1:100~500
Purification	Affinity-chromatography
Immunogen	A synthesized peptide derived from human PSMB10
Description	The proteasome is a multicatalytic proteinase complex which is characterized by its ability to cleave peptides with Arg, Phe, Tyr, Leu, and Glu adjacent to the leaving group at neutral or slightly basic pH. The proteasome has an ATP-dependent proteolytic activity. This subunit is involved in antigen processing to generate class I binding peptides.
Storage Condition and Buffer	Rabbit IgG in phosphate buffered saline , pH 7.4, 150mM NaCl, 0.02% sodium azide and 50% glycerol. Store at +4°C short term. Store at -20°C long term. Avoid freeze / thaw cycle.

PSMB10 Antibody - Protein Information**Name** PSMB10**Synonyms** LMP10, MECL1**Function**

The proteasome is a multicatalytic proteinase complex which is characterized by its ability to cleave peptides with Arg, Phe, Tyr, Leu, and Glu adjacent to the leaving group at neutral or slightly basic pH. The proteasome has an ATP-dependent proteolytic activity. This subunit is involved in

antigen processing to generate class I binding peptides.

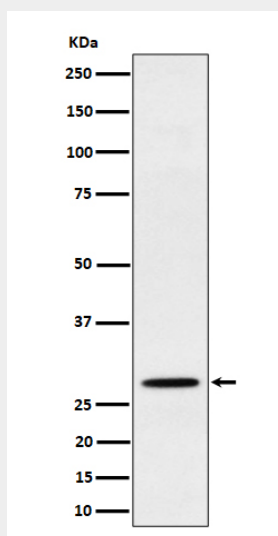
Cellular Location

Cytoplasm {ECO:0000255|PROSITE-ProRule:PRU00809}. Nucleus

PSMB10 Antibody - Protocols

Provided below are standard protocols that you may find useful for product applications.

- [Western Blot](#)
- [Blocking Peptides](#)
- [Dot Blot](#)
- [Immunohistochemistry](#)
- [Immunofluorescence](#)
- [Immunoprecipitation](#)
- [Flow Cytometry](#)
- [Cell Culture](#)

PSMB10 Antibody - Images

Western blot analysis of PSMB10 expression in Raji cell lysate.