

SH3BGRL3 Antibody (Center)
Affinity Purified Rabbit Polyclonal Antibody (Pab)
Catalog # AP9302c**Specification**

SH3BGRL3 Antibody (Center) - Product Information

Application	IHC-P, WB,E
Primary Accession	O9H299
Other Accession	Q3ZCL8
Reactivity	Human
Predicted	Bovine
Host	Rabbit
Clonality	Polyclonal
Isotype	Rabbit IgG
Calculated MW	10438
Antigen Region	24-52

SH3BGRL3 Antibody (Center) - Additional Information**Gene ID** 83442**Other Names**

SH3 domain-binding glutamic acid-rich-like protein 3, SH3 domain-binding protein 1, SH3BP-1, SH3BGRL3

Target/Specificity

This SH3BGRL3 antibody is generated from rabbits immunized with a KLH conjugated synthetic peptide between 24-52 amino acids from the Central region of human SH3BGRL3.

Dilution

IHC-P~~1:50~100

WB~~1:1000

E~~Use at an assay dependent concentration.

Format

Purified polyclonal antibody supplied in PBS with 0.09% (W/V) sodium azide. This antibody is purified through a protein A column, followed by peptide affinity purification.

Storage

Maintain refrigerated at 2-8°C for up to 2 weeks. For long term storage store at -20°C in small aliquots to prevent freeze-thaw cycles.

Precautions

SH3BGRL3 Antibody (Center) is for research use only and not for use in diagnostic or therapeutic procedures.

SH3BGRL3 Antibody (Center) - Protein Information

Name SH3BGRL3

Function Could act as a modulator of glutaredoxin biological activity (Probable). May play a role in cytoskeleton organization (PubMed:[34380438](#)).

Cellular Location

Cytoplasm, cytosol. Cell projection, ruffle membrane. Nucleus

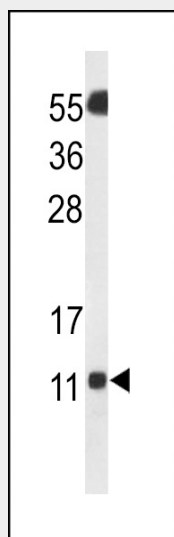
Tissue Location

Ubiquitous (PubMed:11404387, PubMed:11444877). Expressed in heart, kidney and liver (at protein level) (PubMed:11404387). Expressed in brain, lung, spleen and skeletal muscle (PubMed:11404387).

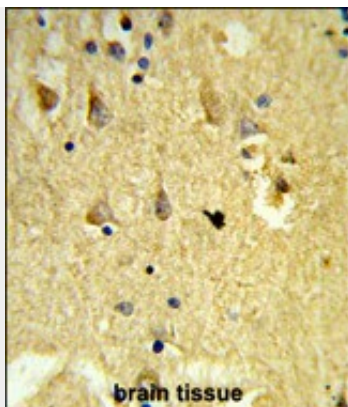
SH3BGRL3 Antibody (Center) - Protocols

Provided below are standard protocols that you may find useful for product applications.

- [Western Blot](#)
- [Blocking Peptides](#)
- [Dot Blot](#)
- [Immunohistochemistry](#)
- [Immunofluorescence](#)
- [Immunoprecipitation](#)
- [Flow Cytometry](#)
- [Cell Culture](#)

SH3BGRL3 Antibody (Center) - Images

Western blot analysis of SH3BGRL3 Antibody (Center) (Cat. #AP9302c) in Neuro2a cell line lysates (35ug/lane). SH3BGRL3 (arrow) was detected using the purified Pab.



Formalin-fixed and paraffin-embedded human brain tissue reacted with SH3BGRL3 Antibody (Center), which was peroxidase-conjugated to the secondary antibody, followed by DAB staining. This data demonstrates the use of this antibody for immunohistochemistry; clinical relevance has not been evaluated.

SH3BGRL3 Antibody (Center) - Background

SH3BGRL3 could act as a modulator of glutaredoxin biological activity.

SH3BGRL3 Antibody (Center) - References

Mazzocco,M., et.al., Biochem. Biophys. Res. Commun. 285 (2), 540-545 (2001)
Henn,A.D., et.al., FASEB J. 15 (7), 1315-1317 (2001)
Seo,J., et.al., Mol. Cells 10 (6), 733-739 (2000)