

TMEM43 Antibody
Rabbit mAb
Catalog # AP93034**Specification****TMEM43 Antibody - Product Information**

Application	WB, IHC
Primary Accession	Q9BTV4
Reactivity	Rat
Clonality	Monoclonal
Other Names	
ARVC5; ARVD5; EDMD7; LUMA; Tmem43; Transmembrane protein 43;	
Isotype	Rabbit IgG
Host	Rabbit
Calculated MW	44876 Da

TMEM43 Antibody - Additional Information

Dilution	WB~~1:1000 IHC~~1:100~500
Purification	Affinity-chromatography
Immunogen	A synthesized peptide derived from human TMEM43
Description	May have an important role in maintaining nuclear envelope structure by organizing protein complexes at the inner nuclear membrane. Required for retaining emerin at the inner nuclear membrane.
Storage Condition and Buffer	Rabbit IgG in phosphate buffered saline , pH 7.4, 150mM NaCl, 0.02% sodium azide and 50% glycerol. Store at +4°C short term. Store at -20°C long term. Avoid freeze / thaw cycle.

TMEM43 Antibody - Protein Information**Name** TMEM43**Function**

May have an important role in maintaining nuclear envelope structure by organizing protein complexes at the inner nuclear membrane. Required for retaining emerin at the inner nuclear membrane (By similarity). Plays a role in the modulation of innate immune signaling through the cGAS-STING pathway by interacting with RNF26 ([PubMed:32614325](http://www.uniprot.org/citations/32614325)). In addition, functions as a critical signaling component in mediating NF-kappa-B activation by acting downstream of EGFR and upstream of CARD10 ([PubMed:27991920](http://www.uniprot.org/citations/27991920)). Contributes to passive conductance current in cochlear glia-like supporting cells, mediated by gap junctions

and necessary for hearing and speech discrimination (PubMed:34050020).

Cellular Location

Endoplasmic reticulum membrane. Nucleus inner membrane; Multi-pass membrane protein. Cell membrane Note=Retained in the inner nuclear membrane through interaction with EMD and A- and B-lamins. The N- and C-termini are oriented towards the nucleoplasm. The majority of the hydrophilic domain resides in the endoplasmic reticulum lumen (By similarity).

Tissue Location

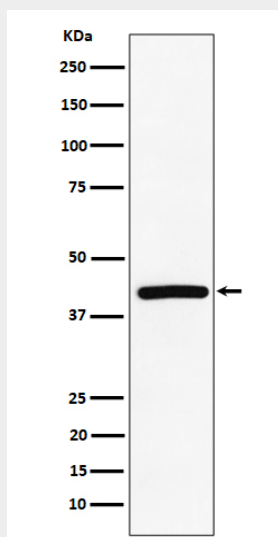
Highest expression in placenta. Also found at lower levels in heart, ovary, spleen, small intestine, thymus, prostate and testis.

TMEM43 Antibody - Protocols

Provided below are standard protocols that you may find useful for product applications.

- [Western Blot](#)
- [Blocking Peptides](#)
- [Dot Blot](#)
- [Immunohistochemistry](#)
- [Immunofluorescence](#)
- [Immunoprecipitation](#)
- [Flow Cytometry](#)
- [Cell Culture](#)

TMEM43 Antibody - Images



Western blot analysis of TMEM43 expression in Jurkat cell lysate.