

Homer1 Antibody
Rabbit mAb
Catalog # AP93038**Specification**

Homer1 Antibody - Product Information

Application	WB, IHC, IP
Primary Accession	Q86YM7
Reactivity	Rat
Clonality	Monoclonal
Other Names	
Homer; HOMER 1A; HOMER 1B; HOMER 1C; homer homolog 1; Homer1; HOMER1A; HOMER1B; HOMER1C; SYN47;	
Isotype	Rabbit IgG
Host	Rabbit
Calculated MW	40277 Da

Homer1 Antibody - Additional Information

Dilution	WB~~1:1000 IHC~~1:100~500 IP~~N/A
Purification	Affinity-chromatography
Immunogen	A synthesized peptide derived from human Homer1
Description	Postsynaptic density scaffolding protein. Binds and cross-links cytoplasmic regions of GRM1, GRM5, ITPR1, DNM3, RYR1, RYR2, SHANK1 and SHANK3. By physically linking GRM1 and GRM5 with ER-associated ITPR1 receptors, it aids the coupling of surface receptors to intracellular calcium release.
Storage Condition and Buffer	Rabbit IgG in phosphate buffered saline , pH 7.4, 150mM NaCl, 0.02% sodium azide and 50% glycerol. Store at +4°C short term. Store at -20°C long term. Avoid freeze / thaw cycle.

Homer1 Antibody - Protein Information**Name** HOMER1 ([HGNC:17512](#))**Function**

Postsynaptic density scaffolding protein. Binds and cross- links cytoplasmic regions of GRM1, GRM5, ITPR1, DNM3, RYR1, RYR2, SHANK1 and SHANK3. By physically linking GRM1 and GRM5 with ER- associated ITPR1 receptors, it aids the coupling of surface receptors to intracellular calcium release. May also couple GRM1 to PI3 kinase through its interaction with AGAP2. Isoform 1 regulates the trafficking and surface expression of GRM5. Isoform 3 acts as a natural dominant

negative, in dynamic competition with constitutively expressed isoform 1 to regulate synaptic metabotropic glutamate function. Isoform 3, may be involved in the structural changes that occur at synapses during long-lasting neuronal plasticity and development. Forms a high-order complex with SHANK1, which in turn is necessary for the structural and functional integrity of dendritic spines (By similarity). Negatively regulates T cell activation by inhibiting the calcineurin-NFAT pathway. Acts by competing with calcineurin/PPP3CA for NFAT protein binding, hence preventing NFAT activation by PPP3CA (PubMed:18218901).

Cellular Location

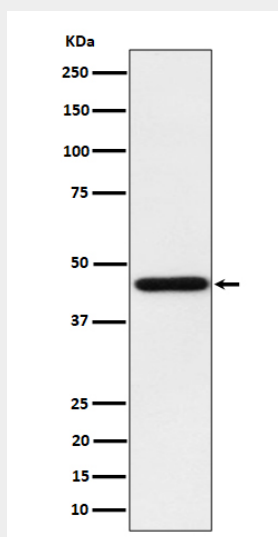
Cytoplasm. Postsynaptic density. Synapse. Cell projection, dendritic spine {ECO:0000250|UniProtKB:Q9Z214}. Note=Isoform 1 inhibits surface expression of GRM5 causing it to be retained in the endoplasmic reticulum.

Homer1 Antibody - Protocols

Provided below are standard protocols that you may find useful for product applications.

- [Western Blot](#)
- [Blocking Peptides](#)
- [Dot Blot](#)
- [Immunohistochemistry](#)
- [Immunofluorescence](#)
- [Immunoprecipitation](#)
- [Flow Cytometry](#)
- [Cell Culture](#)

Homer1 Antibody - Images



Western blot analysis of Homer1 expression in HepG2 cell lysate.