

RNH2C Antibody (Center)
Affinity Purified Rabbit Polyclonal Antibody (Pab)
Catalog # AP9303C**Specification**

RNH2C Antibody (Center) - Product Information

Application	FC, WB,E
Primary Accession	Q8TDP1
Reactivity	Human
Host	Rabbit
Clonality	Polyclonal
Isotype	Rabbit IgG
Calculated MW	17840
Antigen Region	80-108

RNH2C Antibody (Center) - Additional Information**Gene ID** 84153**Other Names**

Ribonuclease H2 subunit C, RNase H2 subunit C, Aicardi-Goutieres syndrome 3 protein, AGS3, RNase H1 small subunit, Ribonuclease HI subunit C, RNASEH2C, AYP1

Target/Specificity

This RNH2C antibody is generated from rabbits immunized with a KLH conjugated synthetic peptide between 80-108 amino acids from the Central region of human RNH2C.

Dilution

FC~~1:10~50

WB~~1:1000

E~~Use at an assay dependent concentration.

Format

Purified polyclonal antibody supplied in PBS with 0.09% (W/V) sodium azide. This antibody is purified through a protein A column, followed by peptide affinity purification.

Storage

Maintain refrigerated at 2-8°C for up to 2 weeks. For long term storage store at -20°C in small aliquots to prevent freeze-thaw cycles.

Precautions

RNH2C Antibody (Center) is for research use only and not for use in diagnostic or therapeutic procedures.

RNH2C Antibody (Center) - Protein Information**Name** RNASEH2C

Synonyms AYP1

Function Non catalytic subunit of RNase H2, an endonuclease that specifically degrades the RNA of RNA:DNA hybrids. Participates in DNA replication, possibly by mediating the removal of lagging-strand Okazaki fragment RNA primers during DNA replication. Mediates the excision of single ribonucleotides from DNA:RNA duplexes.

Cellular Location

Nucleus.

Tissue Location

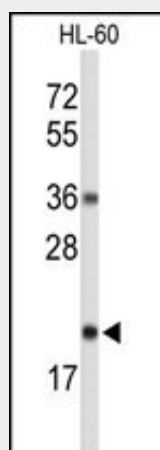
Widely expressed..

RNH2C Antibody (Center) - Protocols

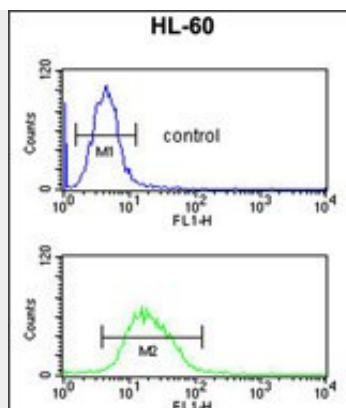
Provided below are standard protocols that you may find useful for product applications.

- [Western Blot](#)
- [Blocking Peptides](#)
- [Dot Blot](#)
- [Immunohistochemistry](#)
- [Immunofluorescence](#)
- [Immunoprecipitation](#)
- [Flow Cytometry](#)
- [Cell Culture](#)

RNH2C Antibody (Center) - Images



Western blot analysis of RNH2C Antibody (Center) (Cat. #AP9303c) in HL-60 cell line lysates (35ug/lane). RNH2C (arrow) was detected using the purified Pab.



RNH2C Antibody (Center) (Cat. #AP9303c) flow cytometric analysis of HL-60 cells (bottom histogram) compared to a negative control cell (top histogram). FITC-conjugated goat-anti-rabbit secondary antibodies were used for the analysis.

RNH2C Antibody (Center) - Background

RNH2C encodes a ribonuclease H subunit that can cleave ribonucleotides from RNA:DNA duplexes.

RNH2C Antibody (Center) - References

- Chon, H., et al., Nucleic Acids Res. 37 (1), 96-110 (2009)
Rice, G., et al., Am. J. Hum. Genet. 81 (4), 713-725 (2007)
Crow, Y.J., et al., Nat. Genet. 38 (8), 910-916 (2006)