

**Nesprin3 Antibody**  
**Rabbit mAb**  
**Catalog # AP93041****Specification**

---

**Nesprin3 Antibody - Product Information**

|   |                        |
|---|------------------------|
| Application                               | WB                     |
| Primary Accession                         | <a href="#">Q6ZMZ3</a> |
| Clonality                                 | Monoclonal             |
| <b>Other Names</b>                        |                        |
| C14orf49; Nesp3; Nesprin 3; NET53; SYNE3; |                        |
| Isotype                                   | Rabbit IgG             |
| Host                                      | Rabbit                 |
| Calculated MW                             | 112216 Da              |

**Nesprin3 Antibody - Additional Information**

|                              |   |
|------------------------------|---|
| Dilution                     | WB~~1:1000  |
| Purification                 | Affinity-chromatography   |
| Immunogen                    | A synthesized peptide derived from human Nesprin3   |
| Description                  | Component of SUN-protein-containing multivariate complexes also called LINC complexes which link the nucleoskeleton and cytoskeleton by providing versatile outer nuclear membrane attachment sites for cytoskeletal filaments. |
| Storage Condition and Buffer | Rabbit IgG in phosphate buffered saline , pH 7.4, 150mM NaCl, 0.02% sodium azide and 50% glycerol. Store at +4°C short term. Store at -20°C long term. Avoid freeze / thaw cycle.   |

**Nesprin3 Antibody - Protein Information****Name** SYNE3 ([HGNC:19861](#))**Function**

As a component of the LINC (Linker of Nucleoskeleton and Cytoskeleton) complex involved in the connection between the nuclear lamina and the cytoskeleton. The nucleocytoplasmic interactions established by the LINC complex play an important role in the transmission of mechanical forces across the nuclear envelope and in nuclear movement and positioning. Probable anchoring protein which tethers the nucleus to the cytoskeleton by binding PLEC which can associate with the intermediate filament system. Plays a role in the regulation of aortic epithelial cell morphology, and is required for flow-induced centrosome polarization and directional migration in aortic endothelial cells.

**Cellular Location**

Nucleus outer membrane; Single-pass type IV membrane protein. Nucleus envelope. Rough endoplasmic reticulum

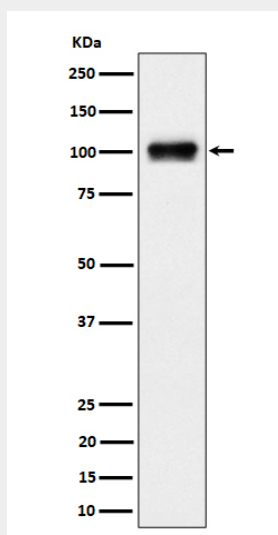
**Tissue Location**

Expressed in aortic endothelial cells (at protein level).

**Nesprin3 Antibody - Protocols**

Provided below are standard protocols that you may find useful for product applications.

- [Western Blot](#)
- [Blocking Peptides](#)
- [Dot Blot](#)
- [Immunohistochemistry](#)
- [Immunofluorescence](#)
- [Immunoprecipitation](#)
- [Flow Cytometry](#)
- [Cell Culture](#)

**Nesprin3 Antibody - Images**

Western blot analysis of Nesprin3 expression in 293 cell lysate.