

NDUFC2 Antibody
Rabbit mAb
Catalog # AP93050**Specification**

NDUFC2 Antibody - Product Information

Application	WB, IHC
Primary Accession	O95298
Clonality	Monoclonal
Other Names	
HLC1; NADHDH2; NDUFC2;	
Isotype	Rabbit IgG
Host	Rabbit
Calculated MW	14188 Da

NDUFC2 Antibody - Additional Information

Dilution	WB~~1:1000 IHC~~1:100~500
Purification	Affinity-chromatography
Immunogen	A synthesized peptide derived from human NDUFC2
Description	Accessory subunit of the mitochondrial membrane respiratory chain NADH dehydrogenase (Complex I), that is believed not to be involved in catalysis. Complex I functions in the transfer of electrons from NADH to the respiratory chain. The immediate electron acceptor for the enzyme is believed to be ubiquinone. Rabbit IgG in phosphate buffered saline , pH 7.4, 150mM NaCl, 0.02% sodium azide and 50% glycerol. Store at +4°C short term. Store at -20°C long term. Avoid freeze / thaw cycle.
Storage Condition and Buffer	

NDUFC2 Antibody - Protein Information**Name** NDUFC2 ([HGNC:7706](#))**Function**

Accessory subunit of the mitochondrial membrane respiratory chain NADH dehydrogenase (Complex I), that is believed not to be involved in catalysis but required for the complex assembly. Complex I functions in the transfer of electrons from NADH to the respiratory chain. The immediate electron acceptor for the enzyme is believed to be ubiquinone.

Cellular Location

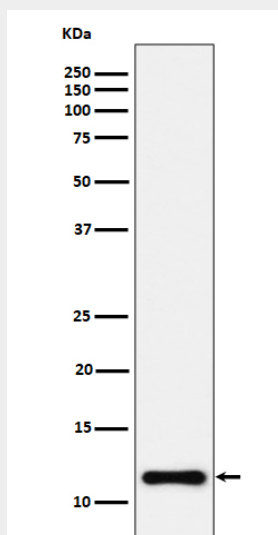
Mitochondrion inner membrane; Single-pass membrane protein; Matrix side

NDUFC2 Antibody - Protocols

Provided below are standard protocols that you may find useful for product applications.

- [Western Blot](#)
- [Blocking Peptides](#)
- [Dot Blot](#)
- [Immunohistochemistry](#)
- [Immunofluorescence](#)
- [Immunoprecipitation](#)
- [Flow Cytometry](#)
- [Cell Culture](#)

NDUFC2 Antibody - Images



Western blot analysis of NDUFC2 expression in HeLa cell lysate.