

NUP155 Antibody
Rabbit mAb
Catalog # AP93060**Specification**

NUP155 Antibody - Product Information

Application	WB
Primary Accession	O75694
Clonality	Monoclonal
Other Names	
ATFB15; N155; Nup155;	
Isotype	Rabbit IgG
Host	Rabbit
Calculated MW	155199 Da

NUP155 Antibody - Additional Information

Dilution	WB~~1:1000
Purification	Affinity-chromatography
Immunogen	A synthesized peptide derived from human NUP155
Description	Essential component of nuclear pore complex. Nucleoporins may be involved both in binding and translocating proteins during nucleocytoplasmic transport.
Storage Condition and Buffer	Rabbit IgG in phosphate buffered saline , pH 7.4, 150mM NaCl, 0.02% sodium azide and 50% glycerol. Store at +4°C short term. Store at -20°C long term. Avoid freeze / thaw cycle.

NUP155 Antibody - Protein Information**Name** NUP155**Synonyms** KIAA0791**Function**

Essential component of nuclear pore complex. Could be essential for embryogenesis. Nucleoporins may be involved both in binding and translocating proteins during nucleocytoplasmic transport.

Cellular Location

Nucleus, nuclear pore complex {ECO:0000250|UniProtKB:P37199}. Nucleus membrane {ECO:0000250|UniProtKB:P37199}; Peripheral membrane protein {ECO:0000250|UniProtKB:P37199}; Cytoplasmic side {ECO:0000250|UniProtKB:P37199}. Nucleus membrane {ECO:0000250|UniProtKB:P37199}; Peripheral membrane protein {ECO:0000250|UniProtKB:P37199}; Nucleoplasmic side {ECO:0000250|UniProtKB:P37199}.

Note=In mitosis, assumes a diffuse cytoplasmic distribution probably as a monomer, before reversing back into a punctate nuclear surface localization at the end of mitosis
{ECO:0000250|UniProtKB:P37199}

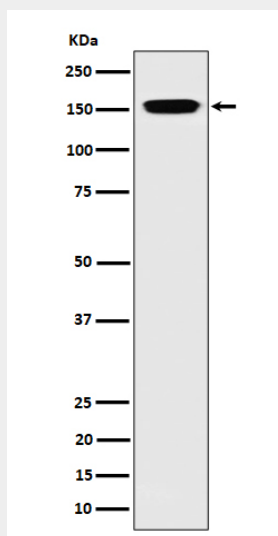
Tissue Location

Expressed in all tissues tested, including heart, brain, placenta, lung, liver, skeletal muscle, kidney and pancreas

NUP155 Antibody - Protocols

Provided below are standard protocols that you may find useful for product applications.

- [Western Blot](#)
- [Blocking Peptides](#)
- [Dot Blot](#)
- [Immunohistochemistry](#)
- [Immunofluorescence](#)
- [Immunoprecipitation](#)
- [Flow Cytometry](#)
- [Cell Culture](#)

NUP155 Antibody - Images

Western blot analysis of NUP155 expression in 293 cell lysate.