

PPP2R5E Antibody
Rabbit mAb
Catalog # AP93062**Specification**

PPP2R5E Antibody - Product Information

Application	WB, IHC, ICC, IP
Primary Accession	Q16537
Clonality	Monoclonal
Other Names	
PPP2R5E;	
Isotype	Rabbit IgG
Host	Rabbit
Calculated MW	54699 Da

PPP2R5E Antibody - Additional Information

Dilution	WB~~1:1000 IHC~~1:100~500 ICC~~N/A IP~~N/A
Purification	Affinity-chromatography
Immunogen	A synthesized peptide derived from human PPP2R5E
Description	The B regulatory subunit might modulate substrate selectivity and catalytic activity, and also might direct the localization of the catalytic enzyme to a particular subcellular compartment.
Storage Condition and Buffer	Rabbit IgG in phosphate buffered saline , pH 7.4, 150mM NaCl, 0.02% sodium azide and 50% glycerol. Store at +4°C short term. Store at -20°C long term. Avoid freeze / thaw cycle.

PPP2R5E Antibody - Protein Information**Name** PPP2R5E**Function**

The B regulatory subunit might modulate substrate selectivity and catalytic activity, and might also direct the localization of the catalytic enzyme to a particular subcellular compartment.

Cellular Location

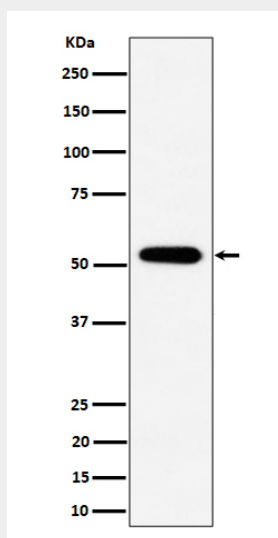
Cytoplasm.

PPP2R5E Antibody - Protocols

Provided below are standard protocols that you may find useful for product applications.

- [Western Blot](#)
- [Blocking Peptides](#)
- [Dot Blot](#)
- [Immunohistochemistry](#)
- [Immunofluorescence](#)
- [Immunoprecipitation](#)
- [Flow Cytometry](#)
- [Cell Culture](#)

PPP2R5E Antibody - Images



Western blot analysis of PPP2R5E expression in 293 cell lysate.