

**PMF1 Antibody**  
**Rabbit mAb**  
**Catalog # AP93067**

## Specification

---

### PMF1 Antibody - Product Information

Application	WB, IP
Primary Accession	<a href="#">Q6P1K2</a>
Reactivity	Rat
Clonality	Monoclonal
<b>Other Names</b>	
Pmf1; Polyamine modulated factor 1;	
Isotype	Rabbit IgG
Host	Rabbit
Calculated MW	23339 Da

### PMF1 Antibody - Additional Information

Dilution	WB~~1:1000 IP~~N/A
Purification	Affinity-chromatography
Immunogen	A synthesized peptide derived from human PMF1
Description	Part of the MIS12 complex which is required for normal chromosome alignment and segregation and kinetochore formation during mitosis. May act as a cotranscription partner of NFE2L2 involved in regulation of polyamine-induced transcription of SSAT.
Storage Condition and Buffer	Rabbit IgG in phosphate buffered saline , pH 7.4, 150mM NaCl, 0.02% sodium azide and 50% glycerol. Store at +4°C short term. Store at -20°C long term. Avoid freeze / thaw cycle.

### PMF1 Antibody - Protein Information

**Name** PMF1 {ECO:0000312|EMBL:AAH65031.1}

#### Function

Part of the MIS12 complex which is required for normal chromosome alignment and segregation and kinetochore formation during mitosis. May act as a cotranscription partner of NFE2L2 involved in regulation of polyamine-induced transcription of SSAT.

#### Cellular Location

Nucleus. Chromosome, centromere, kinetochore Note=Associated with the kinetochore

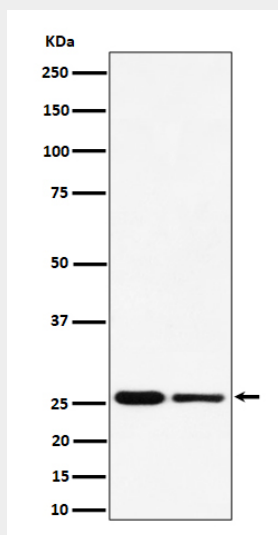
**Tissue Location**

Highest levels of expression in heart and skeletal muscle, with significant levels expressed in kidney and liver

**PMF1 Antibody - Protocols**

Provided below are standard protocols that you may find useful for product applications.

- [Western Blot](#)
- [Blocking Peptides](#)
- [Dot Blot](#)
- [Immunohistochemistry](#)
- [Immunofluorescence](#)
- [Immunoprecipitation](#)
- [Flow Cytometry](#)
- [Cell Culture](#)

**PMF1 Antibody - Images**

Western blot analysis of PMF1 expression in (1) HeLa cell lysate; (2) RAW 264.7 cell lysate.