

**SSX2IP Antibody**  
**Rabbit mAb**  
**Catalog # AP93069**

## Specification

---

### SSX2IP Antibody - Product Information

Application	WB, IHC
Primary Accession	<a href="#">O9Y2D8</a>
Clonality	Monoclonal
<b>Other Names</b>	
ADIP; SSX2IP;	

Isotype	Rabbit IgG
Host	Rabbit
Calculated MW	71236 Da

### SSX2IP Antibody - Additional Information

Dilution	WB~~1:1000 IHC~~1:100~500
Purification	Affinity-chromatography
Immunogen	A synthesized peptide derived from human SSX2IP
Description	Belongs to an adhesion system, which plays a role in the organization of homotypic, interneuronal and heterotypic cell-cell adherens junctions (AJs). May connect the nectin-afadin and E-cadherin-catenin system through alpha-actinin and may be involved in organization of the actin cytoskeleton at AJs through afadin and alpha-actinin.
Storage Condition and Buffer	Rabbit IgG in phosphate buffered saline , pH 7.4, 150mM NaCl, 0.02% sodium azide and 50% glycerol. Store at +4°C short term. Store at -20°C long term. Avoid freeze / thaw cycle.

### SSX2IP Antibody - Protein Information

**Name** SSX2IP

**Synonyms** KIAA0923

#### Function

Belongs to an adhesion system, which plays a role in the organization of homotypic, interneuronal and heterotypic cell-cell adherens junctions (AJs). May connect the nectin-afadin and E-cadherin-catenin system through alpha-actinin and may be involved in organization of the actin cytoskeleton at AJs through afadin and alpha- actinin (By similarity). Involved in cell movement:

localizes at the leading edge of moving cells in response to PDGF and is required for the formation of the leading edge and the promotion of cell movement, possibly via activation of Rac signaling (By similarity). Acts as a centrosome maturation factor, probably by maintaining the integrity of the pericentriolar material and proper microtubule nucleation at mitotic spindle poles. The function seems to implicate at least in part WRAP73; the SSX2IP:WRAP73 complex is proposed to act as regulator of spindle anchoring at the mitotic centrosome (PubMed:<a href="http://www.uniprot.org/citations/23816619" target="\_blank">23816619</a>, PubMed:<a href="http://www.uniprot.org/citations/26545777" target="\_blank">26545777</a>). Involved in ciliogenesis (PubMed:<a href="http://www.uniprot.org/citations/24356449" target="\_blank">24356449</a>). It is required for targeted recruitment of the BBSome, CEP290, RAB8, and SSTR3 to the cilia (PubMed:<a href="http://www.uniprot.org/citations/24356449" target="\_blank">24356449</a>).

#### Cellular Location

Cell junction, adherens junction. Nucleus. Cytoplasm, cytoskeleton, microtubule organizing center, centrosome, centriolar satellite. Cytoplasm, cytoskeleton, cilium basal body. Note=Not found at cell-matrix AJs

#### Tissue Location

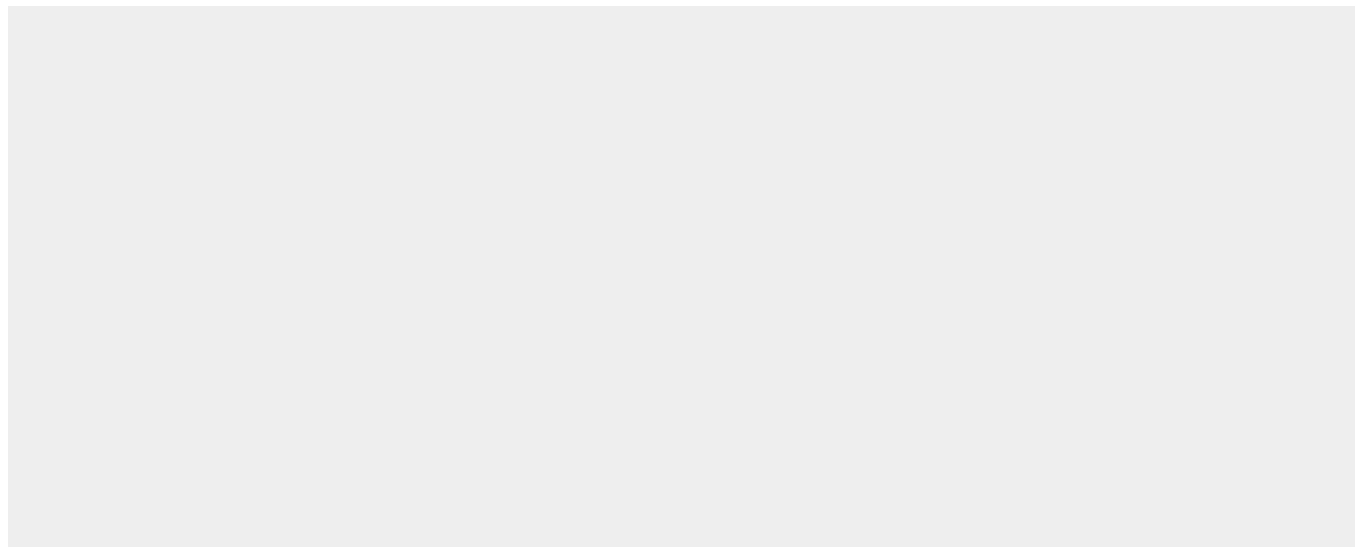
Widely expressed, with the highest expression in brain, intermediate expression in kidney, testis, spinal cord, liver, heart, lung, skeletal muscle, ovary, fetal liver and fetal brain, and little to no expression in pancreas and spleen. All specific brain regions showed intermediate to high expression, with highest expression in amygdala. Also expressed in fetal tissues, mainly in liver and brain

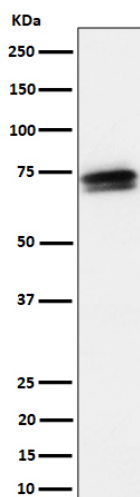
#### SSX2IP Antibody - Protocols

Provided below are standard protocols that you may find useful for product applications.

- [Western Blot](#)
- [Blocking Peptides](#)
- [Dot Blot](#)
- [Immunohistochemistry](#)
- [Immunofluorescence](#)
- [Immunoprecipitation](#)
- [Flow Cytometry](#)
- [Cell Culture](#)

#### SSX2IP Antibody - Images





Western blot analysis of SSX2IP expression in HeLa cell lysate.