

SLC25A12 Antibody
Rabbit mAb
Catalog # AP93071**Specification**

SLC25A12 Antibody - Product Information

Application	WB, IP
Primary Accession	O75746
Reactivity	Rat
Clonality	Monoclonal
Other Names	
AGC1; ARALAR; ARALAR1; SLC25A12;	
Isotype	Rabbit IgG
Host	Rabbit
Calculated MW	74762 Da

SLC25A12 Antibody - Additional Information

Purification	Affinity-chromatography
Immunogen	A synthesized peptide derived from human SLC25A12
Description	Calcium-dependent mitochondrial aspartate and glutamate carrier. May have a function in the urea cycle.
Storage Condition and Buffer	Rabbit IgG in phosphate buffered saline , pH 7.4, 150mM NaCl, 0.02% sodium azide and 50% glycerol. Store at +4°C short term. Store at -20°C long term. Avoid freeze / thaw cycle.

SLC25A12 Antibody - Protein Information

Name SLC25A12 ([HGNC:10982](#))

Function

Mitochondrial electrogenic aspartate/glutamate antiporter that favors efflux of aspartate and entry of glutamate and proton within the mitochondria as part of the malate-aspartate shuttle (PubMed: [11566871](http://www.uniprot.org/citations/11566871), PubMed: [19641205](http://www.uniprot.org/citations/19641205), PubMed: [24515575](http://www.uniprot.org/citations/24515575), PubMed: [38945283](http://www.uniprot.org/citations/38945283)). Also mediates the uptake of L-cysteinesulfinatate (3-sulfinat-L-alanine) by mitochondria in exchange of L-glutamate and proton (PubMed: [11566871](http://www.uniprot.org/citations/11566871)). Can also exchange L-cysteinesulfinatate with aspartate in their anionic form without any proton translocation (PubMed: [11566871](http://www.uniprot.org/citations/11566871)). Lacks transport activity towards L-glutamine or gamma-aminobutyric acid (GABA) (PubMed: [38945283](http://www.uniprot.org/citations/38945283)).

Cellular Location

Mitochondrion inner membrane; Multi-pass membrane protein

Tissue Location

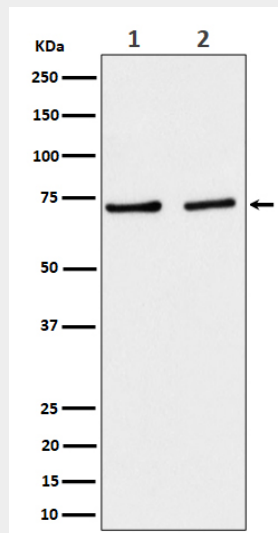
Expressed predominantly in the heart and skeletal muscle, weakly in brain and kidney.

SLC25A12 Antibody - Protocols

Provided below are standard protocols that you may find useful for product applications.

- [Western Blot](#)
- [Blocking Peptides](#)
- [Dot Blot](#)
- [Immunohistochemistry](#)
- [Immunofluorescence](#)
- [Immunoprecipitation](#)
- [Flow Cytometry](#)
- [Cell Culture](#)

SLC25A12 Antibody - Images



Western blot analysis of SLC25A12 expression in (1) A431 cell lysate; (2) NIH/3T3 cell lysate.