

**Adiponectin Antibody**  
**Rabbit mAb**  
**Catalog # AP93073****Specification****Adiponectin Antibody - Product Information**

Application	WB, IHC
Primary Accession	<a href="#">Q15848</a>
Clonality	Monoclonal
<b>Other Names</b>	
ACDC; ACRP30; Adipocyte; Adiponectin; Adiponectin precursor; Adipoq; ADIPQTL1; ADPN; APM1; GBP28; Gelatin binding protein 28;	
Isotype	Rabbit IgG
Host	Rabbit
Calculated MW	26414 Da

**Adiponectin Antibody - Additional Information**

Dilution	WB~~1:1000 IHC~~1:100~500
Purification	Affinity-chromatography
Immunogen	A synthesized peptide derived from human Adiponectin
Description	Important adipokine involved in the control of fat metabolism and insulin sensitivity, with direct anti-diabetic, anti-atherogenic and anti-inflammatory activities. Stimulates AMPK phosphorylation and activation in the liver and the skeletal muscle, enhancing glucose utilization and fatty-acid combustion.
Storage Condition and Buffer	Rabbit IgG in phosphate buffered saline , pH 7.4, 150mM NaCl, 0.02% sodium azide and 50% glycerol. Store at +4°C short term. Store at -20°C long term. Avoid freeze / thaw cycle.

**Adiponectin Antibody - Protein Information****Name** ADIPOQ**Function**

Important adipokine involved in the control of fat metabolism and insulin sensitivity, with direct anti-diabetic, anti-atherogenic and anti-inflammatory activities. Stimulates AMPK phosphorylation and activation in the liver and the skeletal muscle, enhancing glucose utilization and fatty-acid combustion. Antagonizes TNF-alpha by negatively regulating its expression in various tissues such as liver and macrophages, and also by counteracting its effects. Inhibits endothelial NF-kappa-B signaling through a cAMP-dependent pathway. May play a role in cell growth, angiogenesis and

tissue remodeling by binding and sequestering various growth factors with distinct binding affinities, depending on the type of complex, LMW, MMW or HMW.

**Cellular Location**

Secreted.

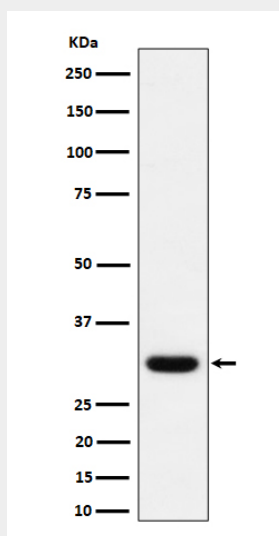
**Tissue Location**

Synthesized exclusively by adipocytes and secreted into plasma.

**Adiponectin Antibody - Protocols**

Provided below are standard protocols that you may find useful for product applications.

- [Western Blot](#)
- [Blocking Peptides](#)
- [Dot Blot](#)
- [Immunohistochemistry](#)
- [Immunofluorescence](#)
- [Immunoprecipitation](#)
- [Flow Cytometry](#)
- [Cell Culture](#)

**Adiponectin Antibody - Images**

Western blot analysis of Adiponectin expression in human plasma lysate.