

SLC27A4 Antibody
Rabbit mAb
Catalog # AP93075**Specification**

SLC27A4 Antibody - Product Information

Application	WB, IHC, ICC, IP
Primary Accession	Q6P1M0
Clonality	Monoclonal
Other Names	
ACSVL4; FATP4; IPS; S27A4; SLC27 A4;	
Isotype	Rabbit IgG
Host	Rabbit
Calculated MW	72064 Da

SLC27A4 Antibody - Additional Information

Dilution	WB~~1:1000 IHC~~1:100~500 ICC~~N/A IP~~N/A
Purification	Affinity-chromatography
Immunogen	A synthesized peptide derived from human SLC27A4
Description	Involved in translocation of long-chain fatty acids (LCFA) across the plasma membrane (PubMed:12556534, PubMed:21395585). Has acyl-CoA ligase activity for long-chain and very-long-chain fatty acids (VLCFAs) (PubMed:24269233). Appears to be the principal fatty acid transporter in small intestinal enterocytes. Plays a role in the formation of the epidermal barrier. Required for fat absorption in early embryogenesis (By similarity).
Storage Condition and Buffer	Rabbit IgG in phosphate buffered saline , pH 7.4, 150mM NaCl, 0.02% sodium azide and 50% glycerol. Store at +4°C short term. Store at -20°C long term. Avoid freeze / thaw cycle.

SLC27A4 Antibody - Protein Information**Name** SLC27A4 ([HGNC:10998](#))**Function**

Mediates the levels of long-chain fatty acids (LCFA) in the cell by facilitating their transport across

cell membranes (PubMed:10518211, PubMed:12556534, PubMed:20448275, PubMed:21395585, PubMed:22022213). Appears to be the principal fatty acid transporter in small intestinal enterocytes (PubMed:20448275). Also functions as an acyl-CoA ligase catalyzing the ATP-dependent formation of fatty acyl- CoA using LCFA and very-long-chain fatty acids (VLCFA) as substrates, which prevents fatty acid efflux from cells and might drive more fatty acid uptake (PubMed:22022213, PubMed:24269233). Plays a role in the formation of the epidermal barrier. Required for fat absorption in early embryogenesis (By similarity). Probably involved in fatty acid transport across the blood barrier (PubMed:21395585). Indirectly inhibits RPE65 via substrate competition and via production of VLCFA derivatives like lignoceroyl-CoA. Prevents light-induced degeneration of rods and cones (By similarity).

Cellular Location

Endoplasmic reticulum membrane; Multi-pass membrane protein

Tissue Location

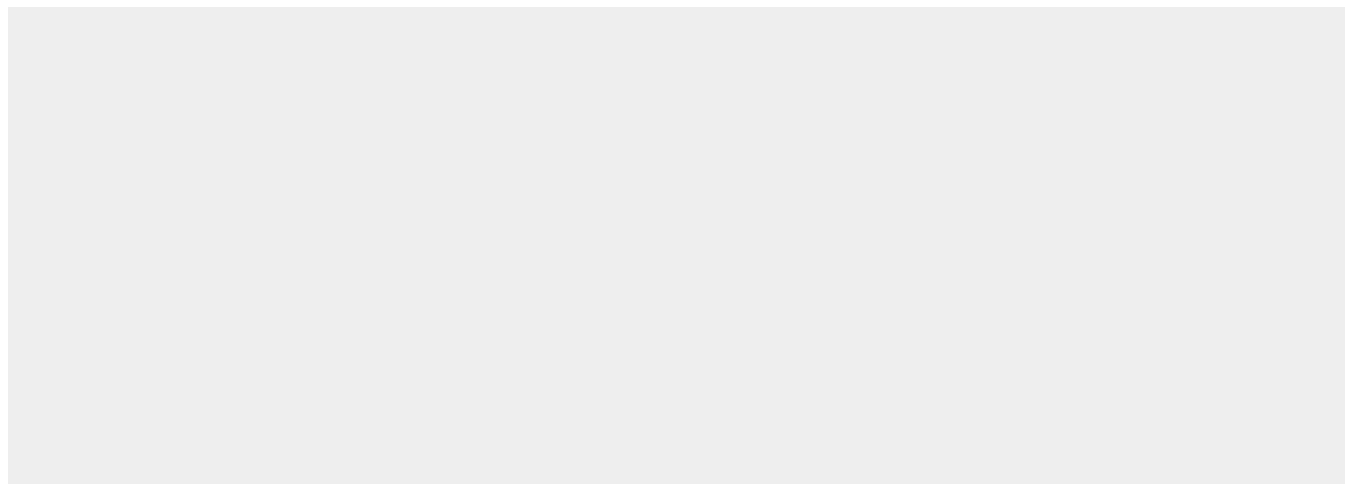
Expressed at highest levels in brain, testis, colon and kidney. Expressed at medium levels in heart and liver, small intestine and stomach. Expressed at low levels in peripheral leukocytes, bone marrow, skeletal muscle and aorta. Expressed in adipose tissue (PubMed:24269233, PubMed:9878842). Expressed in brain gray matter (PubMed:21395585).

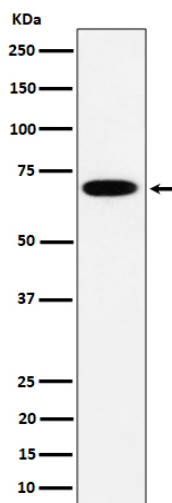
SLC27A4 Antibody - Protocols

Provided below are standard protocols that you may find useful for product applications.

- [Western Blot](#)
- [Blocking Peptides](#)
- [Dot Blot](#)
- [Immunohistochemistry](#)
- [Immunofluorescence](#)
- [Immunoprecipitation](#)
- [Flow Cytometry](#)
- [Cell Culture](#)

SLC27A4 Antibody - Images





Western blot analysis of SLC27A4 expression in HepG2 cell lysate.