

**RPS8 Antibody**  
**Rabbit mAb**  
**Catalog # AP93076****Specification**

---

**RPS8 Antibody - Product Information**

Application	WB, FC, ICC, IP
Primary Accession	<a href="#">P62241</a>
Reactivity	Rat
Clonality	Monoclonal
<b>Other Names</b>	
RPS8;	

Isotype	Rabbit IgG
Host	Rabbit
Calculated MW	24205 Da

**RPS8 Antibody - Additional Information**

Dilution	WB~~1:1000 FC~~1:10~50 ICC~~N/A IP~~N/A
Purification	Affinity-chromatography
Immunogen	A synthesized peptide derived from human RPS8
Description	Belongs to the ribosomal protein S8e family.
Storage Condition and Buffer	Rabbit IgG in phosphate buffered saline , pH 7.4, 150mM NaCl, 0.02% sodium azide and 50% glycerol. Store at +4°C short term. Store at -20°C long term. Avoid freeze / thaw cycle.

**RPS8 Antibody - Protein Information****Name** RPS8 ([HGNC:10441](#))**Function**

Component of the small ribosomal subunit (PubMed:<a href="http://www.uniprot.org/citations/23636399" target="\_blank">23636399</a>). The ribosome is a large ribonucleoprotein complex responsible for the synthesis of proteins in the cell (PubMed:<a href="http://www.uniprot.org/citations/23636399" target="\_blank">23636399</a>). Part of the small subunit (SSU) processome, first precursor of the small eukaryotic ribosomal subunit. During the assembly of the SSU processome in the nucleolus, many ribosome biogenesis factors, an RNA chaperone and ribosomal proteins associate with the nascent pre-rRNA and work in concert to generate RNA folding, modifications, rearrangements and cleavage as well as targeted degradation of pre-ribosomal RNA by the RNA exosome (PubMed:<a href="http://www.uniprot.org/citations/34516797" target="\_blank">34516797</a>).

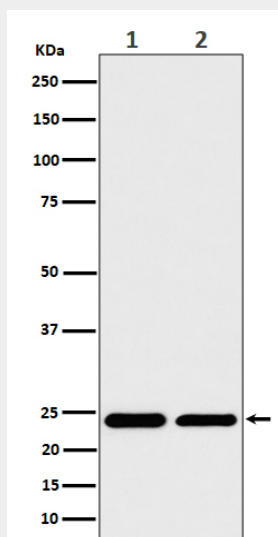
**Cellular Location**

Cytoplasm. Membrane; Lipid-anchor. Nucleus, nucleolus. Note=Localized in cytoplasmic mRNP granules containing untranslated mRNAs.

**RPS8 Antibody - Protocols**

Provided below are standard protocols that you may find useful for product applications.

- [Western Blot](#)
- [Blocking Peptides](#)
- [Dot Blot](#)
- [Immunohistochemistry](#)
- [Immunofluorescence](#)
- [Immunoprecipitation](#)
- [Flow Cytometry](#)
- [Cell Culture](#)

**RPS8 Antibody - Images**

Western blot analysis of RPS8 expression in (1) 293 cell lysate; (2) RAW 264.7 cell lysate.