

**Meckelin Antibody**  
**Rabbit mAb**  
**Catalog # AP93081****Specification**

---

**Meckelin Antibody - Product Information**

Application	WB, IHC, FC, ICC
Primary Accession	<a href="#">Q5HYA8</a>
Reactivity	Rat
Clonality	Monoclonal
<b>Other Names</b>	
JBTS6; MKS3; NPHP11; TMEM67; TNEM67;	

Isotype	Rabbit IgG
Host	Rabbit
Calculated MW	111745 Da

**Meckelin Antibody - Additional Information**

Dilution	WB~~1:1000 IHC~~1:100~500 FC~~1:10~50 ICC~~N/A
Purification	Affinity-chromatography
Immunogen	A synthesized peptide derived from human Meckelin
Description	Meckelin localizes to the primary cilium and to the plasma membrane. It functions in centriole migration to the apical membrane and formation of the primary cilium. Defects in the gene are a cause of Meckel syndrome type 3 (MKS3) and Joubert syndrome type 6 (JBTS6).
Storage Condition and Buffer	Rabbit IgG in phosphate buffered saline , pH 7.4, 150mM NaCl, 0.02% sodium azide and 50% glycerol. Store at +4°C short term. Store at -20°C long term. Avoid freeze / thaw cycle.

**Meckelin Antibody - Protein Information****Name** TMEM67**Synonyms** MKS3**Function**

Required for ciliary structure and function. Part of the tectonic-like complex which is required for tissue-specific ciliogenesis and may regulate ciliary membrane composition (By similarity). Involved in centrosome migration to the apical cell surface during early ciliogenesis. Involved in

the regulation of cilia length and appropriate number through the control of centrosome duplication. Is a key regulator of stereociliary bundle orientation (By similarity). Required for epithelial cell branching morphology. Essential for endoplasmic reticulum-associated degradation (ERAD) of surfactant protein C (SFTPC). Involved in the negative regulation of canonical Wnt signaling, and activation of the non-canonical cascade stimulated by WNT5A (PubMed:<a href="http://www.uniprot.org/citations/26035863" target="\_blank">26035863</a>). In non-canonical Wnt signaling, it may act as ROR2 coreceptor (By similarity).

#### Cellular Location

Cell membrane; Multi-pass membrane protein. Endoplasmic reticulum membrane; Multi-pass membrane protein. Cell projection, cilium Cytoplasm, cytoskeleton, cilium basal body. Note=Localizes at the transition zone, a region between the basal body and the ciliary axoneme (PubMed:22121117).

#### Tissue Location

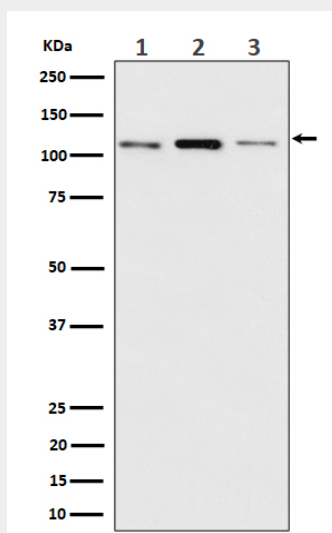
Widely expressed in adult and fetal tissues. Expressed at higher level in spinal cord.

### Meckelin Antibody - Protocols

Provided below are standard protocols that you may find useful for product applications.

- [Western Blot](#)
- [Blocking Peptides](#)
- [Dot Blot](#)
- [Immunohistochemistry](#)
- [Immunofluorescence](#)
- [Immunoprecipitation](#)
- [Flow Cytometry](#)
- [Cell Culture](#)

### Meckelin Antibody - Images



Western blot analysis of Meckelin expression in (1) MCF7 cell lysate; (2) RAW 264.7 cell lysate; (3) C6 cell lysate.