

TMF Antibody
Rabbit mAb
Catalog # AP93092

Specification

TMF Antibody - Product Information

Application	WB, ICC
Primary Accession	P82094
Clonality	Monoclonal
Other Names	
ARA160; TMF; Tmf1;	
Isotype	Rabbit IgG
Host	Rabbit
Calculated MW	122842 Da

TMF Antibody - Additional Information

Dilution	WB~~1:1000 ICC~~N/A
Purification	Affinity-chromatography
Immunogen	A synthesized peptide derived from human TMF
Description	Potential coactivator of the androgen receptor. Mediates STAT3 degradation. May play critical roles in two RAB6-dependent retrograde transport processes: one from endosomes to the Golgi and the other from the Golgi to the ER. This protein binds the HIV-1 TATA element and inhibits transcriptional activation by the TATA-binding protein (TBP).
Storage Condition and Buffer	Rabbit IgG in phosphate buffered saline , pH 7.4, 150mM NaCl, 0.02% sodium azide and 50% glycerol. Store at +4°C short term. Store at -20°C long term. Avoid freeze / thaw cycle.

TMF Antibody - Protein Information

Name TMF1

Synonyms ARA160

Function

Potential coactivator of the androgen receptor. Mediates STAT3 degradation. May play critical roles in two RAB6-dependent retrograde transport processes: one from endosomes to the Golgi and the other from the Golgi to the ER. This protein binds the HIV-1 TATA element and inhibits

transcriptional activation by the TATA-binding protein (TBP).

Cellular Location

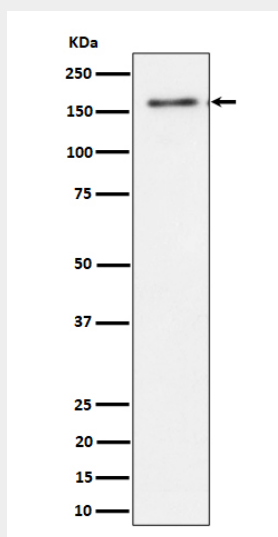
Cytoplasm. Nucleus. Golgi apparatus membrane. Note=Concentrated at the budding structures localized at the tips of cisternae

TMF Antibody - Protocols

Provided below are standard protocols that you may find useful for product applications.

- [Western Blot](#)
- [Blocking Peptides](#)
- [Dot Blot](#)
- [Immunohistochemistry](#)
- [Immunofluorescence](#)
- [Immunoprecipitation](#)
- [Flow Cytometry](#)
- [Cell Culture](#)

TMF Antibody - Images



Western blot analysis of TMF expression in HeLa cell lysate.