

BIN1 Antibody
Rabbit mAb
Catalog # AP93096

Specification

BIN1 Antibody - Product Information

Application	WB, IHC, ICC
Primary Accession	O00499
Reactivity	Rat
Clonality	Monoclonal
Other Names	
AMPH2; Amphiphysin 2; Amphiphysin II; Amphiphysin like protein; AMPHL; Bin1; Box Dependant MYC Interacting Protein 1; Bridging integrator 1; Myc box dependent interacting protein 1; SH3P9;	
Isotype	Rabbit IgG
Host	Rabbit
Calculated MW	64699 Da

BIN1 Antibody - Additional Information

Dilution	WB~~1:1000 IHC~~1:100~500 ICC~~N/A
Purification	Affinity-chromatography
Immunogen	A synthesized peptide derived from human BIN1
Description	May be involved in regulation of synaptic vesicle endocytosis. May act as a tumor suppressor and inhibits malignant cell transformation.
Storage Condition and Buffer	Rabbit IgG in phosphate buffered saline , pH 7.4, 150mM NaCl, 0.02% sodium azide and 50% glycerol. Store at +4°C short term. Store at -20°C long term. Avoid freeze / thaw cycle.

BIN1 Antibody - Protein Information

Name BIN1

Synonyms AMPHL

Function

Is a key player in the control of plasma membrane curvature, membrane shaping and membrane remodeling. Required in muscle cells for the formation of T-tubules, tubular invaginations of the plasma membrane that function in depolarization-contraction coupling (PubMed:24755653). Is a negative regulator of endocytosis (By similarity). Is also involved in the regulation of intracellular vesicles sorting, modulation of BACE1 trafficking and the control of amyloid-beta production (PubMed:<a

[27179792](http://www.uniprot.org/citations/27179792)). In neuronal circuits, endocytosis regulation may influence the internalization of PHF-tau aggregates (By similarity). May be involved in the regulation of MYC activity and the control cell proliferation (PubMed:[8782822](http://www.uniprot.org/citations/8782822)). Has actin bundling activity and stabilizes actin filaments against depolymerization in vitro (PubMed:[28893863](http://www.uniprot.org/citations/28893863)).

Cellular Location

[Isoform BIN1]: Nucleus. Cytoplasm Endosome {ECO:0000250|UniProtKB:O08539}. Cell membrane, sarcolemma, T- tubule {ECO:0000250|UniProtKB:O08839}

Tissue Location

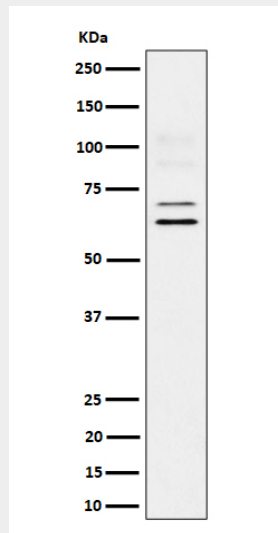
Ubiquitous. Highest expression in the brain and muscle (PubMed:9182667). Expressed in oligodendrocytes (PubMed:27488240). Isoform IIA is expressed only in the brain, where it is detected in the gray matter, but not in the white matter (PubMed:27488240). Isoform BIN1 is widely expressed with highest expression in skeletal muscle.

BIN1 Antibody - Protocols

Provided below are standard protocols that you may find useful for product applications.

- [Western Blot](#)
- [Blocking Peptides](#)
- [Dot Blot](#)
- [Immunohistochemistry](#)
- [Immunofluorescence](#)
- [Immunoprecipitation](#)
- [Flow Cytometry](#)
- [Cell Culture](#)

BIN1 Antibody - Images



Western blot analysis of BIN1 expression in U87-MG cell lysate.