

NDUFAB1 Antibody
Rabbit mAb
Catalog # AP93098**Specification****NDUFAB1 Antibody - Product Information**

Application	WB, IHC, IP
Primary Accession	O14561
Clonality	Monoclonal
Other Names	
ACP; FASN2A; ndufab1; SDAP;	
Isotype	Rabbit IgG
Host	Rabbit
Calculated MW	17417 Da

NDUFAB1 Antibody - Additional Information

Dilution	WB~~1:1000 IHC~~1:100~500 IP~~N/A
Purification	Affinity-chromatography
Immunogen	A synthesized peptide derived from human NDUFAB1
Description	Carrier of the growing fatty acid chain in fatty acid biosynthesis in mitochondria. Accessory and non-catalytic subunit of the mitochondrial membrane respiratory chain NADH dehydrogenase (Complex I), which functions in the transfer of electrons from NADH to the respiratory chain.
Storage Condition and Buffer	Rabbit IgG in phosphate buffered saline , pH 7.4, 150mM NaCl, 0.02% sodium azide and 50% glycerol. Store at +4°C short term. Store at -20°C long term. Avoid freeze / thaw cycle.

NDUFAB1 Antibody - Protein Information**Name** NDUFAB1 ([HGNC:7694](#))**Function**

Carrier of the growing fatty acid chain in fatty acid biosynthesis (By similarity) (PubMed:27626371). Accessory and non- catalytic subunit of the mitochondrial membrane respiratory chain NADH dehydrogenase (Complex I), which functions in the transfer of electrons from NADH to the respiratory chain (PubMed:27626371). Accessory protein, of the core iron-sulfur cluster (ISC) assembly complex, that regulates, in association with LYRM4, the stability and the cysteine desulfurase activity of NFS1 and participates

in the [2Fe-2S] clusters assembly on the scaffolding protein ISCU (PubMed:31664822). The core iron-sulfur cluster (ISC) assembly complex is involved in the de novo synthesis of a [2Fe-2S] cluster, the first step of the mitochondrial iron-sulfur protein biogenesis. This process is initiated by the cysteine desulfurase complex (NFS1:LYRM4:NDUFAB1) that produces persulfide which is delivered on the scaffold protein ISCU in a FXN- dependent manner. Then this complex is stabilized by FDX2 which provides reducing equivalents to accomplish the [2Fe-2S] cluster assembly. Finally, the [2Fe-2S] cluster is transferred from ISCU to chaperone proteins, including HSCB, HSPA9 and GLRX5 (By similarity).

Cellular Location

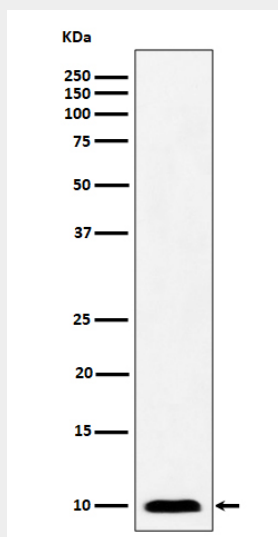
Mitochondrion

NDUFAB1 Antibody - Protocols

Provided below are standard protocols that you may find useful for product applications.

- [Western Blot](#)
- [Blocking Peptides](#)
- [Dot Blot](#)
- [Immunohistochemistry](#)
- [Immunofluorescence](#)
- [Immunoprecipitation](#)
- [Flow Cytometry](#)
- [Cell Culture](#)

NDUFAB1 Antibody - Images



Western blot analysis of NDUFAB1 expression in A431 cell lysate.