

**RalA Antibody**  
**Rabbit mAb**  
**Catalog # AP93108**

## Specification

---

### RalA Antibody - Product Information

|                    |                        |
|--------------------|------------------------|
| Application        | WB, IHC                |
| Primary Accession  | <a href="#">P11233</a> |
| Clonality          | Monoclonal             |
| <b>Other Names</b> |                        |
| Ral a; RAL; RALA;  |                        |
| Isotype            | Rabbit IgG             |
| Host               | Rabbit                 |
| Calculated MW      | 23567 Da               |

### RalA Antibody - Additional Information

|                              |  |
|------------------------------|--|
| Dilution                     | WB~~1:1000<br>IHC~~1:100~500   |
| Purification                 | Affinity-chromatography  |
| Immunogen                    | A synthesized peptide derived from human RalA  |
| Description                  | Multifuntional GTPase involved in a variety of cellular processes including gene expression, cell migration, cell proliferation, oncogenic transformation and membrane trafficking. Accomplishes its multiple functions by interacting with distinct downstream effectors. |
| Storage Condition and Buffer | Rabbit IgG in phosphate buffered saline , pH 7.4, 150mM NaCl, 0.02% sodium azide and 50% glycerol. Store at +4°C short term. Store at -20°C long term. Avoid freeze / thaw cycle.  |

### RalA Antibody - Protein Information

**Name** RALA

**Synonyms** RAL

#### Function

Multifunctional GTPase involved in a variety of cellular processes including gene expression, cell migration, cell proliferation, oncogenic transformation and membrane trafficking. Accomplishes its multiple functions by interacting with distinct downstream effectors (PubMed:<a href="http://www.uniprot.org/citations/18756269" target="\_blank">18756269</a>, PubMed:<a href="http://www.uniprot.org/citations/19306925" target="\_blank">19306925</a>, PubMed:<a href="http://www.uniprot.org/citations/20005108" target="\_blank">20005108</a>, PubMed:<a

<http://www.uniprot.org/citations/21822277> target="\_blank">21822277</a>, PubMed:<<http://www.uniprot.org/citations/30500825> target="\_blank">30500825</a>). Acts as a GTP sensor for GTP-dependent exocytosis of dense core vesicles. The RALA- exocyst complex regulates integrin-dependent membrane raft exocytosis and growth signaling (PubMed:<<http://www.uniprot.org/citations/20005108> target="\_blank">20005108</a>). Key regulator of LPAR1 signaling and competes with GRK2 for binding to LPAR1 thus affecting the signaling properties of the receptor. Required for anchorage- independent proliferation of transformed cells (PubMed:<<http://www.uniprot.org/citations/19306925> target="\_blank">19306925</a>). During mitosis, supports the stabilization and elongation of the intracellular bridge between dividing cells. Cooperates with EXOC2 to recruit other components of the exocyst to the early midbody (PubMed:<<http://www.uniprot.org/citations/18756269> target="\_blank">18756269</a>). During mitosis, also controls mitochondrial fission by recruiting to the mitochondrion RALBP1, which mediates the phosphorylation and activation of DNML1 by the mitotic kinase cyclin B- CDK1 (PubMed:<<http://www.uniprot.org/citations/21822277> target="\_blank">21822277</a>).

### Cellular Location

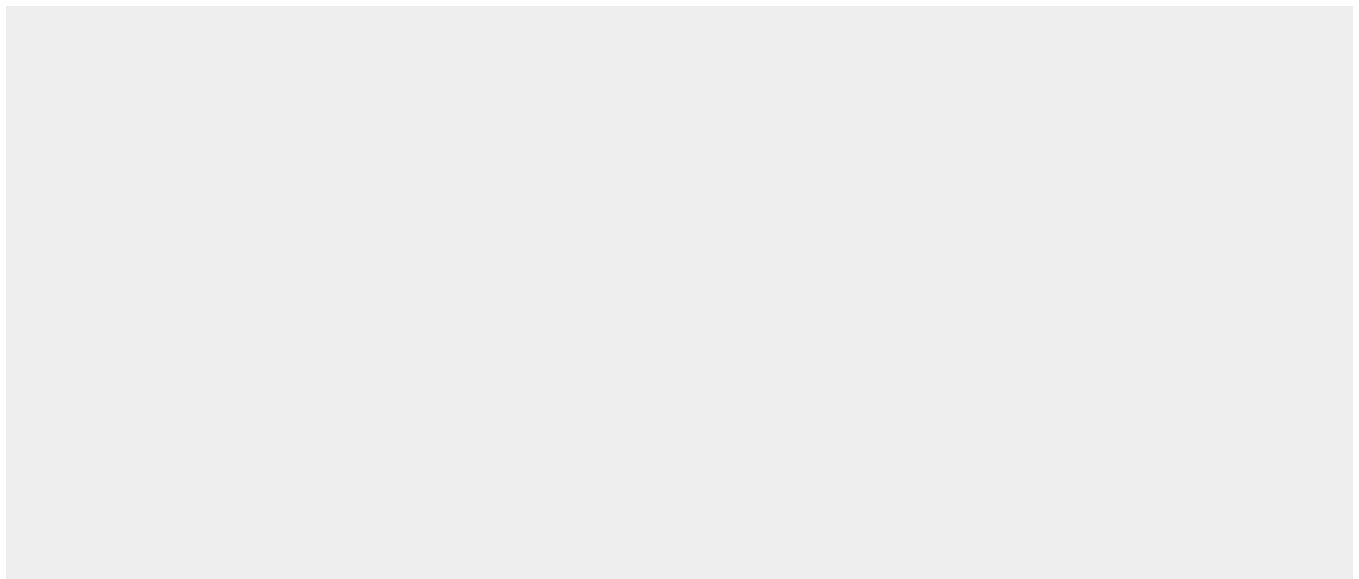
Cell membrane; Lipid-anchor; Cytoplasmic side. Cleavage furrow. Midbody, Midbody ring. Mitochondrion. Note=Predominantly at the cell surface in the absence of LPA. In the presence of LPA, colocalizes with LPAR1 and LPAR2 in endocytic vesicles (PubMed:19306925). May colocalize with CNTRL/centriolin at the midbody ring (PubMed:16213214). However, localization at the midbody at late cytokinesis was not confirmed (PubMed:18756269). Relocalizes to the mitochondrion during mitosis where it regulates mitochondrial fission (PubMed:21822277)

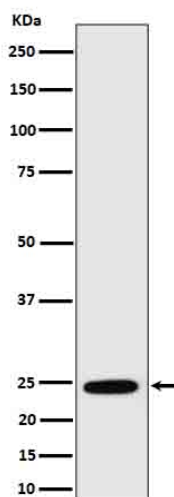
### RaIA Antibody - Protocols

Provided below are standard protocols that you may find useful for product applications.

- [Western Blot](#)
- [Blocking Peptides](#)
- [Dot Blot](#)
- [Immunohistochemistry](#)
- [Immunofluorescence](#)
- [Immunoprecipitation](#)
- [Flow Cytometry](#)
- [Cell Culture](#)

### RaIA Antibody - Images





Western blot analysis of RalA in MCF7 cell lysate.