

htrA1 Antibody
Rabbit mAb
Catalog # AP93110

Specification

htrA1 Antibody - Product Information

| | |
|--|------------------------|
| Application | WB, ICC |
| Primary Accession | O92743 |
| Clonality | Monoclonal |
| Other Names | |
| ARMD7; CARASIL; High-temperature requirement A serine peptidase 1; HtrA; HtrA serine peptidase 1; HTRA1; IGFBP5 protease; ORF480; Protease serine 11 (IGF binding); protease serine 11; PRSS11; Serine protease 11; Serine protease HTRA1; | |
| Isotype | Rabbit IgG |
| Host | Rabbit |
| Calculated MW | 51287 Da |

htrA1 Antibody - Additional Information

| | |
|------------------------------|--|
| Dilution | WB~~1:1000 ICC~~N/A |
| Purification | Affinity-chromatography |
| Immunogen | A synthesized peptide derived from human htrA1 |
| Description | Protease that regulate the availability of nsulin-like growth factors (IGFs) by cleaving IGF-binding proteins. Represses signaling by TGF-beta family members. |
| Storage Condition and Buffer | Rabbit IgG in phosphate buffered saline , pH 7.4, 150mM NaCl, 0.02% sodium azide and 50% glycerol. Store at +4°C short term. Store at -20°C long term. Avoid freeze / thaw cycle. |

htrA1 Antibody - Protein Information

Name HTRA1

Synonyms HTRA, PRSS11

Function

Serine protease with a variety of targets, including extracellular matrix proteins such as fibronectin. HTRA1-generated fibronectin fragments further induce synovial cells to up-regulate MMP1 and MMP3 production. May also degrade proteoglycans, such as aggrecan, decorin and fibromodulin. Through cleavage of proteoglycans, may release soluble FGF-glycosaminoglycan complexes that promote the range and intensity of FGF signals in the extracellular space. Regulates the availability of insulin-like growth factors (IGFs) by cleaving IGF- binding proteins. Inhibits signaling mediated by TGF-beta family members. This activity requires the integrity of the

catalytic site, although it is unclear whether TGF-beta proteins are themselves degraded. By acting on TGF-beta signaling, may regulate many physiological processes, including retinal angiogenesis and neuronal survival and maturation during development. Intracellularly, degrades TSC2, leading to the activation of TSC2 downstream targets.

Cellular Location

Cell membrane. Secreted Cytoplasm, cytosol. Note=Predominantly secreted (PubMed:15208355). Also found associated with the plasma membrane (PubMed:21297635).

Tissue Location

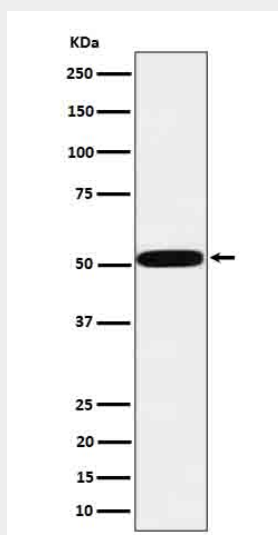
Widely expressed, with strongest expression in placenta (at protein level). Secreted by synovial fibroblasts. Up- regulated in osteoarthritis and rheumatoid arthritis synovial fluids and cartilage as compared with non-arthritic (at protein level)

htrA1 Antibody - Protocols

Provided below are standard protocols that you may find useful for product applications.

- [Western Blot](#)
- [Blocking Peptides](#)
- [Dot Blot](#)
- [Immunohistochemistry](#)
- [Immunofluorescence](#)
- [Immunoprecipitation](#)
- [Flow Cytometry](#)
- [Cell Culture](#)

htrA1 Antibody - Images



Western blot analysis of htrA1 in MCF7 cell lysate.