

Ube1L / UBA7 Antibody
Rabbit mAb
Catalog # AP93112**Specification****Ube1L / UBA7 Antibody - Product Information**

| | |
|---|------------------------|
| Application | WB, IHC, FC |
| Primary Accession | P41226 |
| Reactivity | Rat |
| Clonality | Monoclonal |
| Other Names | |
| UBA1B; UBA7; UBE1L; UBE2; Ubiquitin activating enzyme 2; Ubiquitin-activating enzyme 7; Ubiquitin-activating enzyme E1 homolog; | |
| Isotype | Rabbit IgG |
| Host | Rabbit |
| Calculated MW | 111694 Da |

Ube1L / UBA7 Antibody - Additional Information

| | |
|------------------------------|--|
| Dilution | WB~~1:1000 IHC~~1:100~500 FC~~1:10~50 |
| Purification | Affinity-chromatography |
| Immunogen | A synthesized peptide derived from human Ube1L / UBA7 |
| Description | Activates ubiquitin by first adenylating with ATP its C-terminal glycine residue and thereafter linking this residue to the side chain of a cysteine residue in E1, yielding an ubiquitin-E1 thioester and free AMP. |
| Storage Condition and Buffer | Rabbit IgG in phosphate buffered saline , pH 7.4, 150mM NaCl, 0.02% sodium azide and 50% glycerol. Store at +4°C short term. Store at -20°C long term. Avoid freeze / thaw cycle. |

Ube1L / UBA7 Antibody - Protein Information

Name UBA7 {ECO:0000303|PubMed:28397838, ECO:0000312|HGNC:HGNC:12471}

Function

E1-activating enzyme that catalyzes the covalent conjugation of the ubiquitin-like protein product of ISG15 to additional interferon stimulated proteins (ISGs) as well as other cellular proteins such as P53 in a process termed protein ISGylation (PubMed:27545325). Plays an essential role in antiviral immunity together with ISG15 by restricting the replication of many viruses including rabies virus, influenza virus, sindbis virus, rotavirus or human cytomegalovirus (PubMed:16254333),

PubMed:19073728,
PubMed:29056542,
PubMed:29743376,
PubMed:37722521).
For example, ISG15 modification of influenza A protein NS1 disrupts the association of the NS1
with importin-alpha leading to NS1 nuclear import inhibition (PubMed:20133869). ISGylation of
human cytomegalovirus protein UL26 regulates its stability and inhibits its activities to suppress
NF-kappa-B signaling (PubMed:<a href="http://www.uniprot.org/citations/27564865"
target="_blank">27564865).

Cellular Location

Cytoplasm. Nucleus

Tissue Location

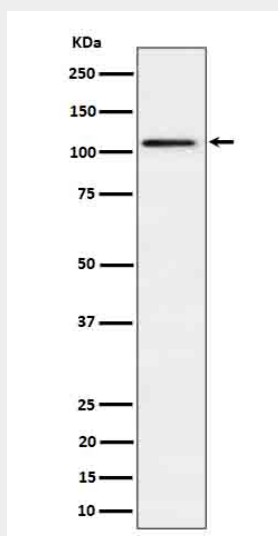
Expressed in a variety of normal and tumor cell types, but is reduced in lung cancer cell lines

Ube1L / UBA7 Antibody - Protocols

Provided below are standard protocols that you may find useful for product applications.

- [Western Blot](#)
- [Blocking Peptides](#)
- [Dot Blot](#)
- [Immunohistochemistry](#)
- [Immunofluorescence](#)
- [Immunoprecipitation](#)
- [Flow Cytometry](#)
- [Cell Culture](#)

Ube1L / UBA7 Antibody - Images



Western blot analysis of Ube1L / UBA7 in HepG2 cell lysate.