

IL22 Antibody
Rabbit mAb
Catalog # AP93113**Specification**

IL22 Antibody - Product Information

Application	WB
Primary Accession	O9GZX6
Clonality	Monoclonal
Other Names	
IL21; IL22; ILD110; ILTIF; interleukin 21; Interleukin 22; TIFa; TIFIL23; zcyto18;	
Isotype	Rabbit IgG
Host	Rabbit
Calculated MW	20011 Da

IL22 Antibody - Additional Information

Dilution	WB~~1:1000
Purification	Affinity-chromatography
Immunogen	A synthesized peptide derived from human IL22
Description	Cytokine that contributes to the inflammatory response in vivo.
Storage Condition and Buffer	Rabbit IgG in phosphate buffered saline , pH 7.4, 150mM NaCl, 0.02% sodium azide and 50% glycerol. Store at +4°C short term. Store at -20°C long term. Avoid freeze / thaw cycle.

IL22 Antibody - Protein Information**Name** IL22**Synonyms** ILTIF, ZCYTO18**Function**

Cytokine that plays a critical role in modulating tissue responses during inflammation (PubMed:[17204547](http://www.uniprot.org/citations/17204547)). Plays an essential role in the regeneration of epithelial cells to maintain barrier function after injury and for the prevention of further tissue damage (PubMed:[17204547](http://www.uniprot.org/citations/17204547)). Unlike most of the cytokines, has no effect on immune cells. Signals through a heterodimeric receptor composed of two subunits, the specific receptor IL22RA1 which is present on non-immune cells in many organs and the shared subunit IL10RB (PubMed:[10875937](http://www.uniprot.org/citations/10875937), PubMed:[18599299](http://www.uniprot.org/citations/18599299)). Ligation of IL22RA1 with IL22 induces activation of the tyrosine kinases JAK1 and TYK2, which in turn activates STAT3. In turn, promotes cell survival and proliferation through STAT3, ERK1/2 and PI3K/AKT

pathways (PubMed: [25793261](http://www.uniprot.org/citations/25793261), PubMed: [31311100](http://www.uniprot.org/citations/31311100)). Promotes phosphorylation of GSK3B at 'Ser-9' and CTTN (By similarity). Promotes epithelial cell spreading (By similarity).

Cellular Location

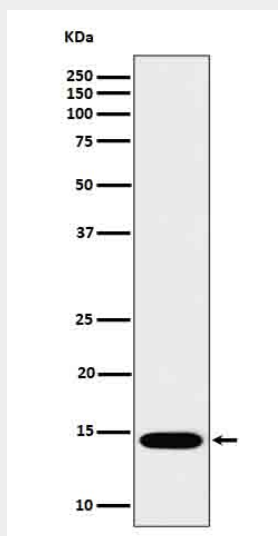
Secreted.

IL22 Antibody - Protocols

Provided below are standard protocols that you may find useful for product applications.

- [Western Blot](#)
- [Blocking Peptides](#)
- [Dot Blot](#)
- [Immunohistochemistry](#)
- [Immunofluorescence](#)
- [Immunoprecipitation](#)
- [Flow Cytometry](#)
- [Cell Culture](#)

IL22 Antibody - Images



Western blot analysis of IL22 in Recombinant Human IL22 protein cell lysate.