

**IL26 Antibody**  
**Rabbit mAb**  
**Catalog # AP93115****Specification**

---

**IL26 Antibody - Product Information**

Application	WB
Primary Accession	<a href="#">Q9NPH9</a>
Clonality	Monoclonal
<b>Other Names</b>	
IL26; Interleukin 26;	
Isotype	Rabbit IgG
Host	Rabbit
Calculated MW	19843 Da

**IL26 Antibody - Additional Information**

Dilution	WB~~1:1000
Purification	Affinity-chromatography
Immunogen	A synthesized peptide derived from human IL26
Description	May play a role in local mechanisms of mucosal immunity and seems to have a proinflammatory function. May play a role in inflammatory bowel disease.
Storage Condition and Buffer	Rabbit IgG in phosphate buffered saline , pH 7.4, 150mM NaCl, 0.02% sodium azide and 50% glycerol. Store at +4°C short term. Store at -20°C long term. Avoid freeze / thaw cycle.

**IL26 Antibody - Protein Information****Name** IL26**Synonyms** AK155**Function**

May play a role in local mechanisms of mucosal immunity and seems to have a pro-inflammatory function. May play a role in inflammatory bowel disease. Activates STAT1 and STAT3, MAPK1/3 (ERK1/2), JUN and AKT. Induces expression of SOCS3, TNF-alpha and IL-8, secretion of IL-8 and IL-10 and surface expression of ICAM1. Decreases proliferation of intestinal epithelial cells. Is inhibited by heparin.

**Cellular Location**

Secreted.

**Tissue Location**

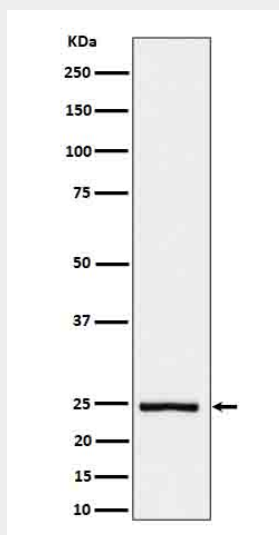
Expressed in HVS transformed T-cells but not other T-cell lines or primary stimulated T-cells.  
Expressed in colonic T- cells including Th17 inflammatory T-cells; the expression is significantly increased in serum of patients with Crohn's disease (at protein level).

## IL26 Antibody - Protocols

Provided below are standard protocols that you may find useful for product applications.

- [Western Blot](#)
- [Blocking Peptides](#)
- [Dot Blot](#)
- [Immunohistochemistry](#)
- [Immunofluorescence](#)
- [Immunoprecipitation](#)
- [Flow Cytometry](#)
- [Cell Culture](#)

## IL26 Antibody - Images



Western blot analysis of IL26 in His-tagged IL26 cell lysate.