

IL12B Antibody
Rabbit mAb
Catalog # AP93117**Specification**

IL12B Antibody - Product Information

Application	WB, FC, ICC
Primary Accession	P29460
Clonality	Monoclonal
Other Names	
CLMF; CLMF p40; CLMF2; IL12 p40; IL12B; IMD28; IMD29; NKSF; NKSF2;	
Isotype	Rabbit IgG
Host	Rabbit
Calculated MW	37169 Da

IL12B Antibody - Additional Information

Dilution	WB~~1:1000 FC~~1:10~50 ICC~~N/A
Purification	Affinity-chromatography
Immunogen	A synthesized peptide derived from human IL12B
Description	Cytokine that can act as a growth factor for activated T and NK cells, enhance the lytic activity of NK/lymphokine-activated killer cells, and stimulate the production of IFN-gamma by resting PBMC.
Storage Condition and Buffer	Rabbit IgG in phosphate buffered saline , pH 7.4, 150mM NaCl, 0.02% sodium azide and 50% glycerol. Store at +4°C short term. Store at -20°C long term. Avoid freeze / thaw cycle.

IL12B Antibody - Protein Information**Name** IL12B**Synonyms** NKSF2**Function**

Cytokine that can act as a growth factor for activated T and NK cells, enhance the lytic activity of NK/lymphokine-activated killer cells, and stimulate the production of IFN-gamma by resting PBMC.

Cellular Location

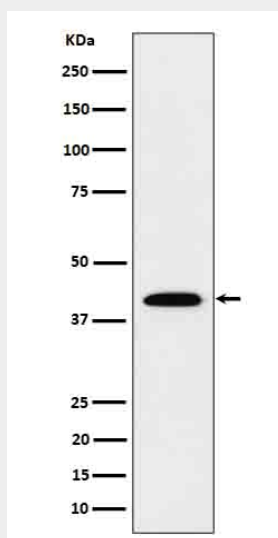
Secreted.

IL12B Antibody - Protocols

Provided below are standard protocols that you may find useful for product applications.

- [Western Blot](#)
- [Blocking Peptides](#)
- [Dot Blot](#)
- [Immunohistochemistry](#)
- [Immunofluorescence](#)
- [Immunoprecipitation](#)
- [Flow Cytometry](#)
- [Cell Culture](#)

IL12B Antibody - Images



Western blot analysis of IL12B in Recombinant Human IL12B protein cell lysate.