

GAS2 Antibody
Rabbit mAb
Catalog # AP93127**Specification**

GAS2 Antibody - Product Information

Application	WB, IHC
Primary Accession	O43903
Clonality	Monoclonal
Other Names	
Gas2; Growth arrest specific 2;	
Isotype	Rabbit IgG
Host	Rabbit
Calculated MW	34945 Da

GAS2 Antibody - Additional Information

Dilution	WB~~1:1000 IHC~~1:100~500
Purification	Affinity-chromatography
Immunogen	A synthesized peptide derived from human GAS2
Description	May play a role in apoptosis by acting as a cell death substrate for caspases. Is cleaved during apoptosis and the cleaved form induces dramatic rearrangements of the actin cytoskeleton and potent changes in the shape of the affected cells. May be involved in the membrane ruffling process.
Storage Condition and Buffer	Rabbit IgG in phosphate buffered saline , pH 7.4, 150mM NaCl, 0.02% sodium azide and 50% glycerol. Store at +4°C short term. Store at -20°C long term. Avoid freeze / thaw cycle.

GAS2 Antibody - Protein Information**Name** GAS2**Function**

Required to maintain microtubule bundles in inner ear supporting cells, affording them with mechanical stiffness to transmit sound energy through the cochlea.

Cellular Location

Cytoplasm, cytoskeleton, stress fiber. Membrane {ECO:0000250|UniProtKB:P11862}; Peripheral membrane protein {ECO:0000250|UniProtKB:P11862} Note=Component of the microfilament system. Colocalizes with actin fibers at the cell border and along the stress fibers in growth-arrested fibroblasts. Mainly membrane-associated. When hyperphosphorylated, accumulates at

membrane ruffles (By similarity) Colocalizes with detyrosinated alpha-tubulin along the length of microtubule bundles in inner and outer pillar cells (By similarity)
{ECO:0000250|UniProtKB:P11862}

Tissue Location

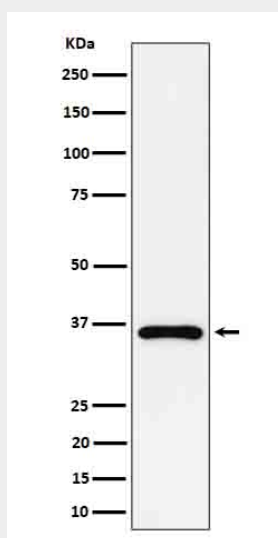
Ubiquitously expressed with highest levels in liver, lung, and kidney. Not found in spleen

GAS2 Antibody - Protocols

Provided below are standard protocols that you may find useful for product applications.

- [Western Blot](#)
- [Blocking Peptides](#)
- [Dot Blot](#)
- [Immunohistochemistry](#)
- [Immunofluorescence](#)
- [Immunoprecipitation](#)
- [Flow Cytometry](#)
- [Cell Culture](#)

GAS2 Antibody - Images



Western blot analysis of GAS2 expression in Jurkat cell lysate.