

IL13 Antibody
Rabbit mAb
Catalog # AP93129**Specification**

IL13 Antibody - Product Information

Application	WB
Primary Accession	P35225
Clonality	Monoclonal
Other Names	
ALRH; BHR1; IL13; Interleukin 13; NC30; P600;	
Isotype	Rabbit IgG
Host	Rabbit
Calculated MW	15816 Da

IL13 Antibody - Additional Information

Dilution	WB~~1:1000
Purification	Affinity-chromatography
Immunogen	A synthesized peptide derived from human IL13
Description	Cytokine (PubMed:8096327, PubMed:8097324). Inhibits inflammatory cytokine production (PubMed:8096327). Synergizes with IL2 in regulating interferon-gamma synthesis (PubMed:8096327).
Storage Condition and Buffer	Rabbit IgG in phosphate buffered saline , pH 7.4, 150mM NaCl, 0.02% sodium azide and 50% glycerol. Store at +4°C short term. Store at -20°C long term. Avoid freeze / thaw cycle.

IL13 Antibody - Protein Information**Name** IL13**Synonyms** NC30**Function**

Cytokine that plays important roles in allergic inflammation and immune response to parasite infection (PubMed:8096327, PubMed:8097324). Synergizes with IL2 in regulating interferon-gamma synthesis (PubMed:8096327). Stimulates B-cell proliferation, and activation of eosinophils, basophils, and mast cells (PubMed:7903680, PubMed:8759755). Plays an

important role in controlling IL33 activity by modulating the production of transmembrane and soluble forms of interleukin-1 receptor-like 1/IL1RL1 (By similarity). Displays the capacity to antagonize Th1-driven proinflammatory immune response and downregulates synthesis of many proinflammatory cytokines including IL1, IL6, IL10, IL12 and TNF-alpha through a mechanism that partially involves suppression of NF-kappa-B (By similarity). Also functions on nonhematopoietic cells, including endothelial cells where it induces vascular cell adhesion protein 1/VCAM1, which is important in the recruitment of eosinophils (PubMed:8639787). Exerts its biological effects through its receptors which comprises the IL4R chain and the IL13RA1 chain, to activate JAK1 and TYK2, leading to the activation of STAT6 (PubMed:9013879). Aside from IL13RA1, another receptor IL13RA2 acts as a high affinity decoy for IL13 and mediates internalization and depletion of extracellular IL13 (PubMed:21622864).

Cellular Location

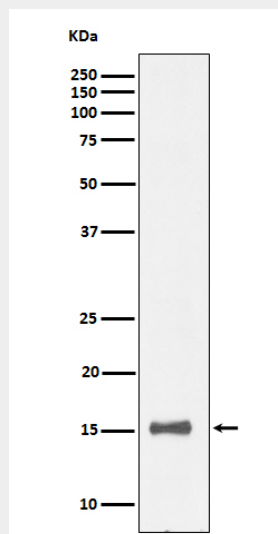
Secreted.

IL13 Antibody - Protocols

Provided below are standard protocols that you may find useful for product applications.

- [Western Blot](#)
- [Blocking Peptides](#)
- [Dot Blot](#)
- [Immunohistochemistry](#)
- [Immunofluorescence](#)
- [Immunoprecipitation](#)
- [Flow Cytometry](#)
- [Cell Culture](#)

IL13 Antibody - Images



Western blot analysis of IL13 expression in human recombinant protein cell lysate.