

DcR1 / CD263 Antibody
Rabbit mAb
Catalog # AP93132**Specification**

DcR1 / CD263 Antibody - Product Information

Application	WB, ICC
Primary Accession	O14798
Reactivity	Rat
Clonality	Monoclonal
Other Names	
CD263; DCR1; Decoy Receptor 1; LIT; TRAILR3; TRID;	
Isotype	Rabbit IgG
Host	Rabbit
Calculated MW	27407 Da

DcR1 / CD263 Antibody - Additional Information

Dilution	WB~~1:1000 ICC~~N/A
Purification	Affinity-chromatography
Immunogen	A synthesized peptide derived from human DcR1 / CD263
Description	DcR1/TRAIL-R3 / TRID / LIT is one of the two putative decoy receptors identified for TRAIL, one of the members of TNF family of apoptosis inducing proteins.
Storage Condition and Buffer	Rabbit IgG in phosphate buffered saline , pH 7.4, 150mM NaCl, 0.02% sodium azide and 50% glycerol. Store at +4°C short term. Store at -20°C long term. Avoid freeze / thaw cycle.

DcR1 / CD263 Antibody - Protein Information**Name** TNFRSF10C**Synonyms** DCR1, LIT, TRAILR3, TRID**Function**

Receptor for the cytotoxic ligand TRAIL. Lacks a cytoplasmic death domain and hence is not capable of inducing apoptosis. May protect cells against TRAIL mediated apoptosis by competing with TRAIL- R1 and R2 for binding to the ligand.

Cellular Location

Cell membrane; Lipid-anchor, GPI-anchor.

Tissue Location

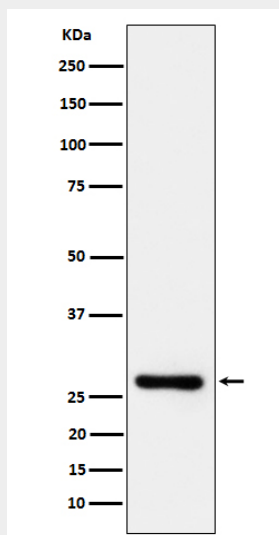
Higher expression in normal tissues than in tumor cell lines. Highly expressed in peripheral blood lymphocytes, spleen, skeletal muscle, placenta, lung and heart

DcR1 / CD263 Antibody - Protocols

Provided below are standard protocols that you may find useful for product applications.

- [Western Blot](#)
- [Blocking Peptides](#)
- [Dot Blot](#)
- [Immunohistochemistry](#)
- [Immunofluorescence](#)
- [Immunoprecipitation](#)
- [Flow Cytometry](#)
- [Cell Culture](#)

DcR1 / CD263 Antibody - Images



Western blot analysis of DcR1/CD263 expression in Jurkat cell lysate.