

**PDGF B Antibody**  
**Rabbit mAb**  
**Catalog # AP93138****Specification**

---

**PDGF B Antibody - Product Information**

|                   |                        |
|-------------------|------------------------|
| Application       | <b>WB</b>              |
| Primary Accession | <a href="#">P01127</a> |
| Reactivity        | <b>Rat</b>             |
| Clonality         | <b>Monoclonal</b>      |

**Other Names**

PDGF2; Pdgfb; Platelet derived growth factor 2; Platelet derived growth factor B chain; Platelet derived growth factor beta; SIS; SSV;

|               |                   |
|---------------|-------------------|
| Isotype       | <b>Rabbit IgG</b> |
| Host          | <b>Rabbit</b>     |
| Calculated MW | <b>27283 Da</b>   |

**PDGF B Antibody - Additional Information**

|                              |  |
|------------------------------|--|
| Dilution                     | <b>WB~~1:1000</b>  |
| Purification                 | <b>Affinity-chromatography</b>   |
| Immunogen                    | <b>A synthesized peptide derived from human PDGF B</b>   |
| Description                  | <b>Growth factor that plays an essential role in the regulation of embryonic development, cell proliferation, cell migration, survival and chemotaxis. Potent mitogen for cells of mesenchymal origin (PubMed:26599395).</b> |
| Storage Condition and Buffer | <b>Rabbit IgG in phosphate buffered saline , pH 7.4, 150mM NaCl, 0.02% sodium azide and 50% glycerol. Store at +4°C short term. Store at -20°C long term. Avoid freeze / thaw cycle.</b>                                     |

**PDGF B Antibody - Protein Information****Name** PDGFB**Synonyms** PDGF2, SIS**Function**

Growth factor that plays an essential role in the regulation of embryonic development, cell proliferation, cell migration, survival and chemotaxis. Potent mitogen for cells of mesenchymal origin (PubMed:<a href="http://www.uniprot.org/citations/26599395" target="\_blank">26599395</a>). Required for normal proliferation and recruitment of pericytes and vascular smooth muscle cells in the central nervous system, skin, lung, heart and placenta. Required for normal blood vessel development, and for normal development of kidney glomeruli.

Plays an important role in wound healing. Signaling is modulated by the formation of heterodimers with PDGFA (By similarity).

**Cellular Location**

Secreted. Note=Released by platelets upon wounding

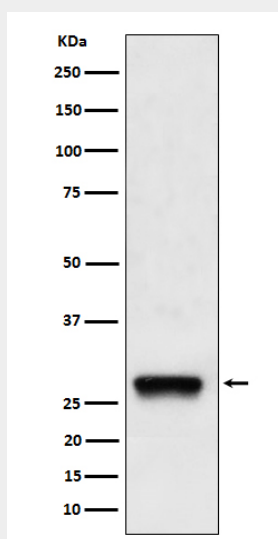
**Tissue Location**

Expressed at high levels in the heart, brain (sustantia nigra), placenta and fetal kidney. Expressed at moderate levels in the brain (hippocampus), skeletal muscle, kidney and lung

**PDGF B Antibody - Protocols**

Provided below are standard protocols that you may find useful for product applications.

- [Western Blot](#)
- [Blocking Peptides](#)
- [Dot Blot](#)
- [Immunohistochemistry](#)
- [Immunofluorescence](#)
- [Immunoprecipitation](#)
- [Flow Cytometry](#)
- [Cell Culture](#)

**PDGF B Antibody - Images**

Western blot analysis of PDGF B expression in A375 cell lysate.