

**Lunatic Fringe Antibody**  
**Rabbit mAb**  
**Catalog # AP93143****Specification**

---

**Lunatic Fringe Antibody - Product Information**

Application	WB
Primary Accession	<a href="#">Q8NES3</a>
Reactivity	Rat
Clonality	Monoclonal
<b>Other Names</b>	
SCDO3;	
Isotype	Rabbit IgG
Host	Rabbit
Calculated MW	41773 Da

**Lunatic Fringe Antibody - Additional Information**

Dilution	WB~~1:1000
Purification	Affinity-chromatography
Immunogen	A synthesized peptide derived from human Lunatic Fringe
Description	Glycosyltransferase that initiates the elongation of O-linked fucose residues attached to EGF-like repeats in the extracellular domain of Notch molecules.
Storage Condition and Buffer	Rabbit IgG in phosphate buffered saline , pH 7.4, 150mM NaCl, 0.02% sodium azide and 50% glycerol. Store at +4°C short term. Store at -20°C long term. Avoid freeze / thaw cycle.

**Lunatic Fringe Antibody - Protein Information****Name** LFNG ([HGNC:6560](#))**Function**

Glycosyltransferase that initiates the elongation of O-linked fucose residues attached to EGF-like repeats in the extracellular domain of Notch molecules. Modulates NOTCH1 activity by modifying O- fucose residues at specific EGF-like domains resulting in inhibition of NOTCH1 activation by JAG1 and enhancement of NOTCH1 activation by DLL1 via an increase in its binding to DLL1 (By similarity). Decreases the binding of JAG1 to NOTCH2 but not that of DLL1 (PubMed:<a href="http://www.uniprot.org/citations/11346656" target="\_blank">11346656</a>). Essential mediator of somite segmentation and patterning (By similarity).

**Cellular Location**

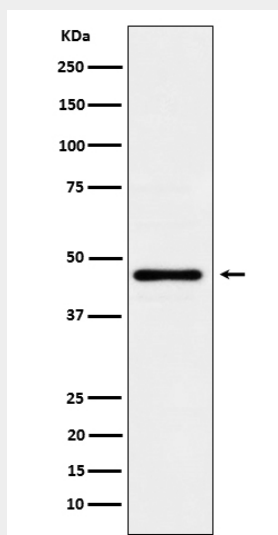
Golgi apparatus {ECO:0000250|UniProtKB:O09010}. Golgi apparatus membrane; Single-pass type II membrane protein

## Lunatic Fringe Antibody - Protocols

Provided below are standard protocols that you may find useful for product applications.

- [Western Blot](#)
- [Blocking Peptides](#)
- [Dot Blot](#)
- [Immunohistochemistry](#)
- [Immunofluorescence](#)
- [Immunoprecipitation](#)
- [Flow Cytometry](#)
- [Cell Culture](#)

## Lunatic Fringe Antibody - Images



Western blot analysis of Lunatic Fringe expression in HeLa cell lysate.