

**Phospho-LRP6 (S1490) Antibody**  
Rabbit mAb  
Catalog # AP93146

**Specification**

---

**Phospho-LRP6 (S1490) Antibody - Product Information**

Application	WB
Primary Accession	<a href="#">O75581</a>
Clonality	Monoclonal
<b>Other Names</b>	
Low-density lipoprotein receptor-related protein 7;	
Isotype	Rabbit IgG
Host	Rabbit
Calculated MW	180429 Da

**Phospho-LRP6 (S1490) Antibody - Additional Information**

Purification	<b>Affinity-chromatography</b>
Immunogen	<b>A synthesized peptide derived from human Phospho-LRP6 (S1490)</b>
Description	<b>Acts as a coreceptor with members of the frizzled family of seven-transmembrane spanning receptors to transduce signal by Wnt proteins (PubMed:11336703, PubMed:11448771, PubMed:15778503, PubMed:11719191, PubMed:15908424, PubMed:16252235).</b>
Storage Condition and Buffer	<b>Rabbit IgG in phosphate buffered saline , pH 7.4, 150mM NaCl, 0.02% sodium azide and 50% glycerol. Store at +4°C short term. Store at -20°C long term. Avoid freeze / thaw cycle.</b>

**Phospho-LRP6 (S1490) Antibody - Protein Information**

**Name** LRP6

**Function**

Component of the Wnt-Fzd-LRP5-LRP6 complex that triggers beta-catenin signaling through inducing aggregation of receptor-ligand complexes into ribosome-sized signalosomes. Cell-surface coreceptor of Wnt/beta-catenin signaling, which plays a pivotal role in bone formation. The Wnt-induced Fzd/LRP6 coreceptor complex recruits DVL1 polymers to the plasma membrane which, in turn, recruits the AXIN1/GSK3B-complex to the cell surface promoting the formation of signalosomes and inhibiting AXIN1/GSK3-mediated phosphorylation and destruction of beta-catenin. Required for posterior patterning of the epiblast during gastrulation (By similarity).

**Cellular Location**

Cell membrane; Single-pass type I membrane protein. Endoplasmic reticulum. Membrane raft.

Note=On Wnt signaling, undergoes a cycle of caveolin- or clathrin-mediated endocytosis and plasma membrane location. Released from the endoplasmic reticulum on palmitoylation Mono-ubiquitination retains it in the endoplasmic reticulum in the absence of palmitoylation. On Wnt signaling, phosphorylated, aggregates and colocalizes with AXIN1 and GSK3B at the plasma membrane in LRP6- signalosomes. Chaperoned to the plasma membrane by MESD (By similarity).

#### Tissue Location

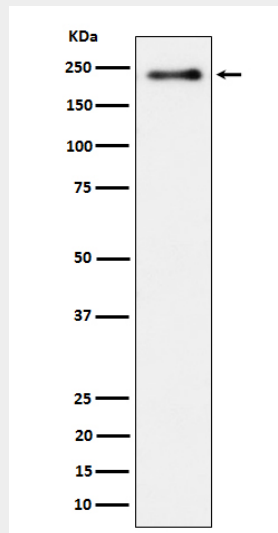
Widely coexpressed with LRP5 during embryogenesis and in adult tissues

#### Phospho-LRP6 (S1490) Antibody - Protocols

Provided below are standard protocols that you may find useful for product applications.

- [Western Blot](#)
- [Blocking Peptides](#)
- [Dot Blot](#)
- [Immunohistochemistry](#)
- [Immunofluorescence](#)
- [Immunoprecipitation](#)
- [Flow Cytometry](#)
- [Cell Culture](#)

#### Phospho-LRP6 (S1490) Antibody - Images



Western blot analysis of Phospho-LRP6 (S1490) expression in heLa treated with Calyculin cell lysate.