

**Palladin Antibody**  
**Rabbit mAb**  
**Catalog # AP93159****Specification**

---

**Palladin Antibody - Product Information**

Application	WB
Primary Accession	<a href="#">Q8WX93</a>
Clonality	Monoclonal
<b>Other Names</b>	
CGI15; MYN; Palld; PNCA1; SIH002; Stx13bp1;	
Isotype	Rabbit IgG
Host	Rabbit
Calculated MW	150564 Da

**Palladin Antibody - Additional Information**

Dilution	WB~~1:1000
Purification	Affinity-chromatography
Immunogen	A synthesized peptide derived from human Palladin
Description	Cytoskeletal protein required for organization of normal actin cytoskeleton. Roles in establishing cell morphology, motility, cell adhesion and cell-extracellular matrix interactions in a variety of cell types.
Storage Condition and Buffer	Rabbit IgG in phosphate buffered saline , pH 7.4, 150mM NaCl, 0.02% sodium azide and 50% glycerol. Store at +4°C short term. Store at -20°C long term. Avoid freeze / thaw cycle.

**Palladin Antibody - Protein Information****Name** PALLD**Synonyms** KIAA0992**Function**

Cytoskeletal protein required for organization of normal actin cytoskeleton. Roles in establishing cell morphology, motility, cell adhesion and cell-extracellular matrix interactions in a variety of cell types. May function as a scaffolding molecule with the potential to influence both actin polymerization and the assembly of existing actin filaments into higher-order arrays. Binds to proteins that bind to either monomeric or filamentous actin. Localizes at sites where active actin remodeling takes place, such as lamellipodia and membrane ruffles. Different isoforms may have functional differences. Involved in the control of morphological and cytoskeletal changes associated with dendritic cell maturation. Involved in targeting ACTN to specific subcellular foci.

**Cellular Location**

Cytoplasm, cytoskeleton. Cell junction, focal adhesion. Cytoplasm, myofibril, sarcomere, Z line. Cell projection, ruffle. Cell projection, podosome {ECO:0000250|UniProtKB:P0C5E3}. Cell projection, lamellipodium. Cell projection, axon {ECO:0000250|UniProtKB:P0C5E3}. Cell projection, growth cone {ECO:0000250|UniProtKB:P0C5E3}. Note=Localizes to stress fibers and Z lines (PubMed:11598191, PubMed:16125169, PubMed:17322171, PubMed:17537434). Preferentially expressed in the excitatory presynaptic terminals (By similarity). {ECO:0000250|UniProtKB:P0C5E3, ECO:0000269|PubMed:11598191, ECO:0000269|PubMed:16125169, ECO:0000269|PubMed:17322171, ECO:0000269|PubMed:17537434}

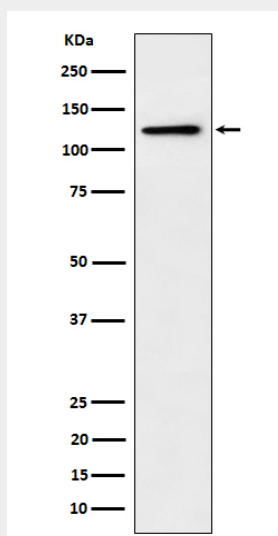
**Tissue Location**

Detected in both muscle and non-muscle tissues. High expression in prostate, ovary, colon, and kidney. Not detected in spleen, skeletal muscle, lung and peripheral blood lymphocytes (at protein level). Protein is overexpressed in FA6, HPAF, IMIM-PC2, SUIT-2 and PancTu-II sporadic pancreatic cancer cell lines

**Palladin Antibody - Protocols**

Provided below are standard protocols that you may find useful for product applications.

- [Western Blot](#)
- [Blocking Peptides](#)
- [Dot Blot](#)
- [Immunohistochemistry](#)
- [Immunofluorescence](#)
- [Immunoprecipitation](#)
- [Flow Cytometry](#)
- [Cell Culture](#)

**Palladin Antibody - Images**

Western blot analysis of Palladin expression in PC3 cell lysate.