

CABP Antibody
Rabbit mAb
Catalog # AP93164**Specification****CABP Antibody - Product Information**

Application	WB
Primary Accession	Q9NZU7
Clonality	Monoclonal
Other Names	
CaBP1; Calbrain; Calcium binding protein 1; Calcium binding protein 5; Caldendrin; HCALB BR;	
Isotype	Rabbit IgG
Host	Rabbit
Calculated MW	39838 Da

CABP Antibody - Additional Information

Purification	Affinity-chromatography
Immunogen	A synthesized peptide derived from human CABP
Description	Modulates calcium-dependent activity of inositol 1,4,5-triphosphate receptors (ITPRs). Inhibits agonist-induced intracellular calcium signaling.
Storage Condition and Buffer	Rabbit IgG in phosphate buffered saline , pH 7.4, 150mM NaCl, 0.02% sodium azide and 50% glycerol. Store at +4°C short term. Store at -20°C long term. Avoid freeze / thaw cycle.

CABP Antibody - Protein Information**Name** CABP1**Function**

Modulates calcium-dependent activity of inositol 1,4,5- triphosphate receptors (ITPRs) (PubMed:14570872). Inhibits agonist- induced intracellular calcium signaling (PubMed:15980432). Enhances inactivation and does not support calcium-dependent facilitation of voltage-dependent P/Q-type calcium channels (PubMed:11865310). Causes calcium-dependent facilitation and inhibits inactivation of L-type calcium channels by binding to the same sites as calmodulin in the C- terminal domain of CACNA1C, but has an opposite effect on channel function (PubMed:15140941). Suppresses the calcium-dependent inactivation of CACNA1D (By similarity). Inhibits TRPC5 channels (PubMed:15895247). Prevents NMDA receptor-induced cellular degeneration. Required for the normal transfer of light

signals through the retina (By similarity).

Cellular Location

Cytoplasm, cytoskeleton. Cytoplasm, perinuclear region. Cell membrane; Lipid-anchor; Cytoplasmic side. Golgi apparatus Postsynaptic density. Note=L-CaBP1 is associated most likely with the cytoskeletal structures, whereas S-CaBP1 is localized at or near the plasma membrane. [Isoform S-CaBP1]: Cytoplasm, cell cortex. Cell membrane; Lipid-anchor Note=S-CaBP1 is localized at or near the plasma membrane

Tissue Location

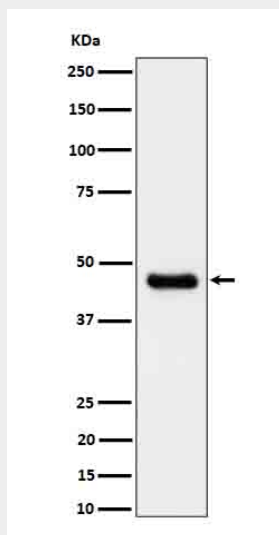
Retina and brain. Somatodendritic compartment of neurons. Calbrain was found exclusively in brain where it is abundant in the hippocampus, habenular area in the epithalamus and in the cerebellum

CABP Antibody - Protocols

Provided below are standard protocols that you may find useful for product applications.

- [Western Blot](#)
- [Blocking Peptides](#)
- [Dot Blot](#)
- [Immunohistochemistry](#)
- [Immunofluorescence](#)
- [Immunoprecipitation](#)
- [Flow Cytometry](#)
- [Cell Culture](#)

CABP Antibody - Images



Western blot analysis of CABP expression in U-87 MG cell lysate.