

Ceruloplasmin Antibody
Rabbit mAb
Catalog # AP93166**Specification****Ceruloplasmin Antibody - Product Information**

Application	WB
Primary Accession	P00450
Reactivity	Rat
Clonality	Monoclonal
Other Names	
Ceruloplasmin; CP2; Ferroxidase;	
Isotype	Rabbit IgG
Host	Rabbit
Calculated MW	122205 Da

Ceruloplasmin Antibody - Additional Information

Dilution	WB~~1:1000
Purification	Affinity-chromatography
Immunogen	A synthesized peptide derived from human Ceruloplasmin
Description	Ceruloplasmin is a blue, copper-binding (6-7 atoms per molecule) glycoprotein. It has ferroxidase activity oxidizing Fe(2+) to Fe(3+) without releasing radical oxygen species. It is involved in iron transport across the cell membrane.
Storage Condition and Buffer	Rabbit IgG in phosphate buffered saline , pH 7.4, 150mM NaCl, 0.02% sodium azide and 50% glycerol. Store at +4°C short term. Store at -20°C long term. Avoid freeze / thaw cycle.

Ceruloplasmin Antibody - Protein Information**Name** CP ([HGNC:2295](#))**Function**

Multifunctional blue, copper-binding (6-7 atoms per molecule) glycoprotein. It has ferroxidase activity oxidizing Fe(2+) to Fe(3+) without releasing radical oxygen species. It is involved in iron transport across the cell membrane (PubMed:[16150804](http://www.uniprot.org/citations/16150804)). Copper ions provide a large number of enzymatic activities. Oxidizes highly toxic ferrous ions to the ferric state for further incorporation onto apo- transferrins, catalyzes Cu(+) oxidation and promotes the oxidation of biogenic amines such as norepinephrine and serotonin (PubMed:[14623105](http://www.uniprot.org/citations/14623105), PubMed:[4643313](http://www.uniprot.org/citations/4643313), PubMed:[4643313](http://www.uniprot.org/citations/4643313)).

[5912351](http://www.uniprot.org/citations/5912351)). Provides Cu(2+) ions for the ascorbate-mediated deaminase degradation of the heparan sulfate chains of GPC1 (By similarity). Has glutathione peroxidase-like activity, can remove both hydrogen peroxide and lipid hydroperoxide in the presence of thiols (PubMed:<[10481051](http://www.uniprot.org/citations/10481051)>). Also shows NO-oxidase and NO₂ synthase activities that determine endocrine NO homeostasis (PubMed:<[16906150](http://www.uniprot.org/citations/16906150)>).

Cellular Location

Secreted. Note=Colocalizes with GPC1 in secretory intracellular compartments {ECO:0000250|UniProtKB:P13635}

Tissue Location

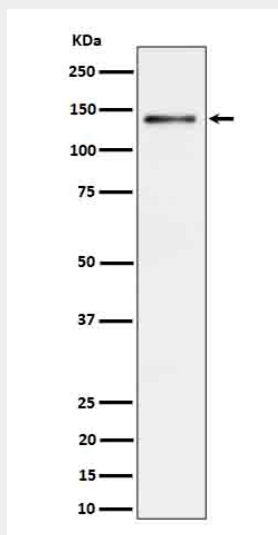
Expressed by the liver and secreted in plasma.

Ceruloplasmin Antibody - Protocols

Provided below are standard protocols that you may find useful for product applications.

- [Western Blot](#)
- [Blocking Peptides](#)
- [Dot Blot](#)
- [Immunohistochemistry](#)
- [Immunofluorescence](#)
- [Immunoprecipitation](#)
- [Flow Cytometry](#)
- [Cell Culture](#)

Ceruloplasmin Antibody - Images



Western blot analysis of Ceruloplasmin expression in Rat liver cell lysate.