

**CENPK Antibody (C-term)**  
**Affinity Purified Rabbit Polyclonal Antibody (Pab)**  
**Catalog # AP9316b**

**Specification**

---

**CENPK Antibody (C-term) - Product Information**

Application	IHC-P, WB,E
Primary Accession	<a href="#">Q9BS16</a>
Reactivity	Human, Mouse
Host	Rabbit
Clonality	Polyclonal
Isotype	Rabbit IgG
Calculated MW	31655
Antigen Region	239-266

**CENPK Antibody (C-term) - Additional Information**

**Gene ID** 64105

**Other Names**

Centromere protein K, CENP-K, Interphase centromere complex protein 37, Protein AF-5alpha, p33, CENPK, ICEN37

**Target/Specificity**

This CENPK antibody is generated from rabbits immunized with a KLH conjugated synthetic peptide between 239-266 amino acids from the C-terminal region of human CENPK.

**Dilution**

IHC-P~~1:50~100

WB~~1:1000

E~~Use at an assay dependent concentration.

**Format**

Purified polyclonal antibody supplied in PBS with 0.09% (W/V) sodium azide. This antibody is purified through a protein A column, followed by peptide affinity purification.

**Storage**

Maintain refrigerated at 2-8°C for up to 2 weeks. For long term storage store at -20°C in small aliquots to prevent freeze-thaw cycles.

**Precautions**

CENPK Antibody (C-term) is for research use only and not for use in diagnostic or therapeutic procedures.

**CENPK Antibody (C-term) - Protein Information**

**Name** CENPK

## Synonyms ICEN37

**Function** Component of the CENPA-CAD (nucleosome distal) complex, a complex recruited to centromeres which is involved in assembly of kinetochore proteins, mitotic progression and chromosome segregation. May be involved in incorporation of newly synthesized CENPA into centromeres via its interaction with the CENPA-NAC complex. Acts in coordination with KNL1 to recruit the NDC80 complex to the outer kinetochore.

## Cellular Location

Nucleus. Chromosome, centromere. Chromosome, centromere, kinetochore. Note=Localizes exclusively in the centromeres The CENPA-CAD complex is probably recruited on centromeres by the CENPA-NAC complex

## Tissue Location

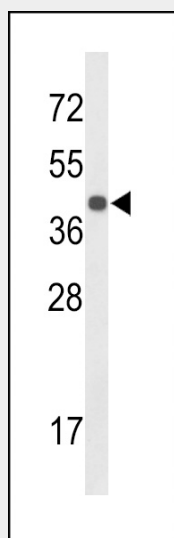
Detected in several fetal organs with highest levels in fetal liver. In adults, it is weakly expressed in lung and placenta.

## CENPK Antibody (C-term) - Protocols

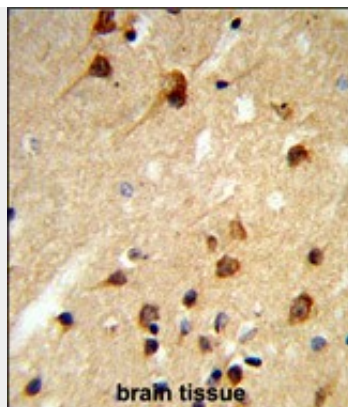
Provided below are standard protocols that you may find useful for product applications.

- [Western Blot](#)
- [Blocking Peptides](#)
- [Dot Blot](#)
- [Immunohistochemistry](#)
- [Immunofluorescence](#)
- [Immunoprecipitation](#)
- [Flow Cytometry](#)
- [Cell Culture](#)

## CENPK Antibody (C-term) - Images



Western blot analysis of CENPK Antibody (C-term) (Cat. #AP9316b) in mouse liver tissue lysates (35ug/lane). CENPK (arrow) was detected using the purified Pab.



Formalin-fixed and paraffin-embedded human brain tissue reacted with CENPK Antibody (C-term), which was peroxidase-conjugated to the secondary antibody, followed by DAB staining. This data demonstrates the use of this antibody for immunohistochemistry; clinical relevance has not been evaluated.

#### **CENPK Antibody (C-term) - Background**

CENPK is a subunit of a CENPH (MIM 605607)-CENPI (MIM 300065)-associated centromeric complex that targets CENPA (MIM 117139) to centromeres and is required for proper kinetochore function and mitotic progression.

#### **CENPK Antibody (C-term) - References**

Cheeseman, I.M., et.al., Mol. Biol. Cell 19 (2), 587-594 (2008)  
Izuta, H., et.al., Genes Cells 11 (6), 673-684 (2006)  
Okada, M., et.al., Nat. Cell Biol. 8 (5), 446-457 (2006)