

PSIP1 / LEDGF Antibody
Rabbit mAb
Catalog # AP93170**Specification**

PSIP1 / LEDGF Antibody - Product Information

Application	WB, IHC, ICC
Primary Accession	O75475
Clonality	Monoclonal
Other Names	
DFS70; LEDGF; p52; p75; PAIP; Psip1; PSIP2;	
Isotype	Rabbit IgG
Host	Rabbit
Calculated MW	60103 Da

PSIP1 / LEDGF Antibody - Additional Information

Dilution	WB~~1:1000 IHC~~1:100~500 ICC~~N/A
Purification	Affinity-chromatography
Immunogen	A synthesized peptide derived from human PSIP1 / LEDGF
Description	Transcriptional coactivator involved in neuroepithelial stem cell differentiation and neurogenesis. Involved in particular in lens epithelial cell gene regulation and stress responses.
Storage Condition and Buffer	Rabbit IgG in phosphate buffered saline , pH 7.4, 150mM NaCl, 0.02% sodium azide and 50% glycerol. Store at +4°C short term. Store at -20°C long term. Avoid freeze / thaw cycle.

PSIP1 / LEDGF Antibody - Protein Information**Name** PSIP1**Synonyms** DFS70, LEDGF, PSIP2**Function**

Transcriptional coactivator involved in neuroepithelial stem cell differentiation and neurogenesis. Involved in particular in lens epithelial cell gene regulation and stress responses. May play an important role in lens epithelial to fiber cell terminal differentiation. May play a protective role during stress-induced apoptosis. Isoform 2 is a more general and stronger transcriptional coactivator. Isoform 2 may also act as an adapter to coordinate pre- mRNA splicing. Cellular cofactor for lentiviral integration.

Cellular Location

Nucleus. Note=Remains chromatin-associated throughout the cell cycle

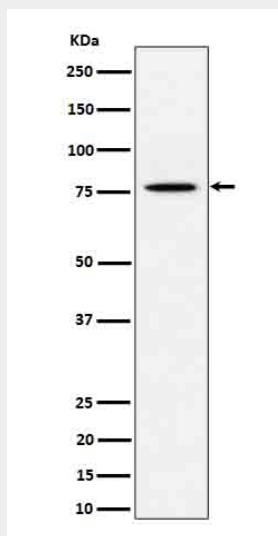
Tissue Location

Widely expressed. Expressed at high level in the thymus. Expressed in fetal and adult brain. Expressed in neurons, but not astrocytes. Markedly elevated in fetal as compared to adult brain. In the adult brain, expressed in the subventricular zone (SVZ), in hippocampus, and undetectable elsewhere. In the fetal brain, expressed in the germinal neuroepithelium and cortical plate regions

PSIP1 / LEDGF Antibody - Protocols

Provided below are standard protocols that you may find useful for product applications.

- [Western Blot](#)
- [Blocking Peptides](#)
- [Dot Blot](#)
- [Immunohistochemistry](#)
- [Immunofluorescence](#)
- [Immunoprecipitation](#)
- [Flow Cytometry](#)
- [Cell Culture](#)

PSIP1 / LEDGF Antibody - Images

Western blot analysis of PSIP1 / LEDGF expression in HeLa cell lysate.