

Histone H2A (mono methyl K118) Antibody
Rabbit mAb
Catalog # AP93189**Specification****Histone H2A (mono methyl K118) Antibody - Product Information**

Application	WB, IHC, ICC
Primary Accession	P04908
Reactivity	Rat
Clonality	Monoclonal
Other Names	
H2A.1; H2A.2; H2A/a; H2A/m; H2A/q; H2A1B; H2AFA; H2AFE; H2AFL; H2AFM; H2AFO; H2AFQ; HIST1H2AE; HIST1H2AJ; HIST2H2AA; HIST2H2AA3; HIST2H2AB; HIST2H2AC;	
Isotype	Rabbit IgG
Host	Rabbit
Calculated MW	14135 Da

Histone H2A (mono methyl K118) Antibody - Additional Information

Dilution	WB~~1:1000 IHC~~1:100~500 ICC~~N/A
Purification	Affinity-chromatography
Immunogen	A synthesized peptide derived from human Histone H2A (mono methyl K118)
Description	Core component of nucleosome. Nucleosomes wrap and compact DNA into chromatin, limiting DNA accessibility to the cellular machineries which require DNA as a template. Histones thereby play a central role in transcription regulation, DNA repair, DNA replication and chromosomal stability. DNA accessibility is regulated via a complex set of post-translational modifications of histones, also called histone code, and nucleosome remodeling.
Storage Condition and Buffer	Rabbit IgG in phosphate buffered saline , pH 7.4, 150mM NaCl, 0.02% sodium azide and 50% glycerol. Store at +4°C short term. Store at -20°C long term. Avoid freeze / thaw cycle.

Histone H2A (mono methyl K118) Antibody - Protein Information**Name** H2AC4 ([HGNC:4734](#))**Function**

Core component of nucleosome. Nucleosomes wrap and compact DNA into chromatin, limiting

DNA accessibility to the cellular machineries which require DNA as a template. Histones thereby play a central role in transcription regulation, DNA repair, DNA replication and chromosomal stability. DNA accessibility is regulated via a complex set of post-translational modifications of histones, also called histone code, and nucleosome remodeling.

Cellular Location

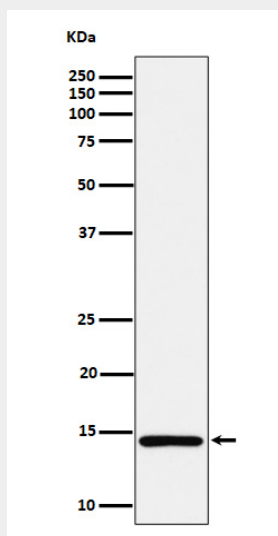
Nucleus. Chromosome.

Histone H2A (mono methyl K118) Antibody - Protocols

Provided below are standard protocols that you may find useful for product applications.

- [Western Blot](#)
- [Blocking Peptides](#)
- [Dot Blot](#)
- [Immunohistochemistry](#)
- [Immunofluorescence](#)
- [Immunoprecipitation](#)
- [Flow Cytometry](#)
- [Cell Culture](#)

Histone H2A (mono methyl K118) Antibody - Images



Western blot analysis of Histone H2A (mono methyl K118) expression in HeLa cell lysate.