

**Phospho-BCAR1 (Y410) Antibody**  
**Rabbit mAb**  
**Catalog # AP93207****Specification****Phospho-BCAR1 (Y410) Antibody - Product Information**

Application	<b>WB</b>
Primary Accession	<a href="#">P56945</a>
Clonality	<b>Monoclonal</b>

**Other Names**

BCAR 1; Bcar1; Breast cancer anti estrogen resistance 1 Breast cancer anti-estrogen resistance protein 1; CAS; Cas scaffolding protein family member 1; CAS1; Cass1; Crk associated substrate; Crk associated substrate p130Cas; CRK-associated substrate; CRKAS; p130cas;

Isotype	<b>Rabbit IgG</b>
Host	<b>Rabbit</b>
Calculated MW	<b>93372 Da</b>

**Phospho-BCAR1 (Y410) Antibody - Additional Information**

Dilution	<b>WB~~1:1000</b>
Purification	<b>Affinity-chromatography</b>
Immunogen	<b>A synthesized peptide derived from human Phospho-BCAR1 (Y410)</b>
Description	<b>Docking protein which plays a central coordinating role for tyrosine kinase-based signaling related to cell adhesion. Implicated in induction of cell migration. Overexpression confers antiestrogen resistance on breast cancer cells.</b>
Storage Condition and Buffer	<b>Rabbit IgG in phosphate buffered saline , pH 7.4, 150mM NaCl, 0.02% sodium azide and 50% glycerol. Store at +4°C short term. Store at -20°C long term. Avoid freeze / thaw cycle.</b>

**Phospho-BCAR1 (Y410) Antibody - Protein Information****Name** BCAR1**Synonyms** CAS, CASS1, CRKAS**Function**

Docking protein which plays a central coordinating role for tyrosine kinase-based signaling related to cell adhesion (PubMed:<a href="http://www.uniprot.org/citations/12432078" target="\_blank">12432078</a>, PubMed:<a href="http://www.uniprot.org/citations/12832404" target="\_blank">12832404</a>). Implicated in induction of cell migration and cell branching (PubMed:<a href="http://www.uniprot.org/citations/12432078" target="\_blank">12432078</a>, PubMed:<a href="http://www.uniprot.org/citations/12832404" target="\_blank">12832404</a>),

PubMed:<a href="http://www.uniprot.org/citations/17038317" target="\_blank">17038317</a>).  
Involved in the BCAR3-mediated inhibition of TGFB signaling (By similarity).

#### Cellular Location

Cell junction, focal adhesion. Cytoplasm Cell projection, axon {ECO:0000250|UniProtKB:Q61140}  
Note=Unphosphorylated form localizes in the cytoplasm (By similarity) Localizes to focal adhesion sites following integrin engagement (By similarity). {ECO:0000250|UniProtKB:Q61140}

#### Tissue Location

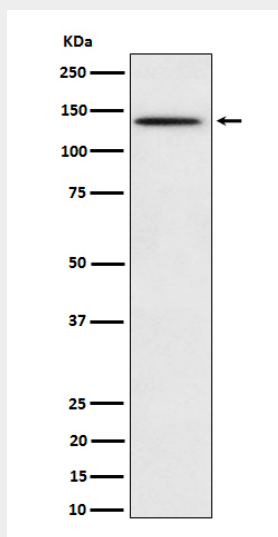
Expressed in B-cells (at protein level) (PubMed:9020138). Widely expressed with an abundant expression in the testis (PubMed:10639512). Low level of expression seen in the liver, thymus, and peripheral blood leukocytes (PubMed:10639512)

### Phospho-BCAR1 (Y410) Antibody - Protocols

Provided below are standard protocols that you may find useful for product applications.

- [Western Blot](#)
- [Blocking Peptides](#)
- [Dot Blot](#)
- [Immunohistochemistry](#)
- [Immunofluorescence](#)
- [Immunoprecipitation](#)
- [Flow Cytometry](#)
- [Cell Culture](#)

### Phospho-BCAR1 (Y410) Antibody - Images



Western blot analysis of Phospho-BCAR1 (Y410) expression in HeLa treated with pervanadate cell lysate.