

Phospho-P70 S6 Kinase beta (S371) Antibody
Rabbit mAb
Catalog # AP93208

Specification

Phospho-P70 S6 Kinase beta (S371) Antibody - Product Information

Application	WB
Primary Accession	Q9UBS0
Reactivity	Rat
Clonality	Monoclonal
Other Names	
p70 beta; P70S6K2; p70S6Kb; Rps6kb2; S6K beta 2; S6K beta; S6K2; SRK; STK14B;	
Isotype	Rabbit IgG
Host	Rabbit
Calculated MW	53455 Da

Phospho-P70 S6 Kinase beta (S371) Antibody - Additional Information

Dilution	WB~~1:1000
Purification	Affinity-chromatography
Immunogen	A synthesized peptide derived from human Phospho-P70 S6 Kinase beta (S371)
Description	Phosphorylates specifically ribosomal protein S6.
Storage Condition and Buffer	Rabbit IgG in phosphate buffered saline , pH 7.4, 150mM NaCl, 0.02% sodium azide and 50% glycerol. Store at +4°C short term. Store at -20°C long term. Avoid freeze / thaw cycle.

Phospho-P70 S6 Kinase beta (S371) Antibody - Protein Information

Name RPS6KB2

Synonyms STK14B

Function

Phosphorylates specifically ribosomal protein S6 (PubMed:29750193). Seems to act downstream of mTOR signaling in response to growth factors and nutrients to promote cell proliferation, cell growth and cell cycle progression in an alternative pathway regulated by MEAK7 (PubMed:29750193).

Cellular Location

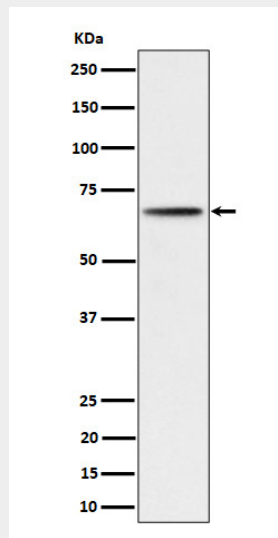
Cytoplasm. Nucleus.

Phospho-P70 S6 Kinase beta (S371) Antibody - Protocols

Provided below are standard protocols that you may find useful for product applications.

- [Western Blot](#)
- [Blocking Peptides](#)
- [Dot Blot](#)
- [Immunohistochemistry](#)
- [Immunofluorescence](#)
- [Immunoprecipitation](#)
- [Flow Cytometry](#)
- [Cell Culture](#)

Phospho-P70 S6 Kinase beta (S371) Antibody - Images



Western blot analysis of Phospho-P70 S6 Kinase beta (S371) expression in 293 cell lysate.