

**phospho-Phospholipase C gamma 1/PLC-gamma-1 (Y1253)**  
**Rabbit mAb**  
**Catalog # AP93209****Specification****phospho-Phospholipase C gamma 1/PLC-gamma-1 (Y1253) - Product Information**

Application	WB
Primary Accession	<a href="#">P19174</a>
Clonality	Monoclonal
<b>Other Names</b>	
PLC-148; PLC-II; PLC-gamma1; PLC1; PLCG-1; Phospholipase C-gamma-1;	
Isotype	Rabbit IgG
Host	Rabbit
Calculated MW	148532 Da

**phospho-Phospholipase C gamma 1/PLC-gamma-1 (Y1253) - Additional Information**

Dilution	WB~~1:1000
Purification	Affinity-chromatography
Immunogen	A synthesized peptide derived from human phospho-Phospholipase C gamma 1/PLC-gamma-1 (Y1253)
Description	Plays a role in actin reorganization and cell migration. The production of the second messenger molecules diacylglycerol (DAG) and inositol 1,4,5-trisphosphate (IP3) is mediated by activated phosphatidylinositol-specific phospholipase C enzymes. Major substrate for heparin-binding growth factor 1 (acidic fibroblast growth factor)-activated tyrosine kinase.
Storage Condition and Buffer	Rabbit IgG in phosphate buffered saline , pH 7.4, 150mM NaCl, 0.02% sodium azide and 50% glycerol. Store at +4°C short term. Store at -20°C long term. Avoid freeze / thaw cycle.

**phospho-Phospholipase C gamma 1/PLC-gamma-1 (Y1253) - Protein Information****Name** PLCG1 ([HGNC:9065](#))**Synonyms** PLC1**Function**

Mediates the production of the second messenger molecules diacylglycerol (DAG) and inositol 1,4,5-trisphosphate (IP3). Plays an important role in the regulation of intracellular signaling cascades. Becomes activated in response to ligand-mediated activation of receptor-type tyrosine

kinases, such as PDGFRA, PDGFRB, EGFR, FGFR1, FGFR2, FGFR3 and FGFR4 (By similarity). Plays a role in actin reorganization and cell migration (PubMed:<a href="http://www.uniprot.org/citations/17229814" target="\_blank">17229814</a>). Guanine nucleotide exchange factor that binds the GTPase DNM1 and catalyzes the dissociation of GDP, allowing a GTP molecule to bind in its place, therefore enhancing DNM1-dependent endocytosis (By similarity).

#### Cellular Location

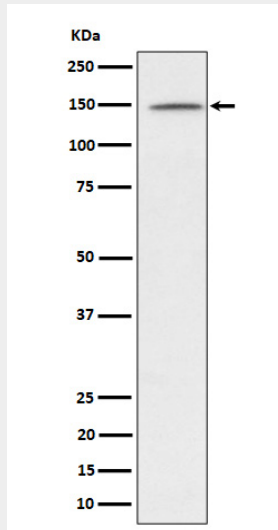
Cell projection, lamellipodium. Cell projection, ruffle. Note= Rapidly redistributed to ruffles and lamellipodia structures in response to epidermal growth factor (EGF) treatment.

### phospho-Phospholipase C gamma 1/PLC-gamma-1 (Y1253) - Protocols

Provided below are standard protocols that you may find useful for product applications.

- [Western Blot](#)
- [Blocking Peptides](#)
- [Dot Blot](#)
- [Immunohistochemistry](#)
- [Immunofluorescence](#)
- [Immunoprecipitation](#)
- [Flow Cytometry](#)
- [Cell Culture](#)

### phospho-Phospholipase C gamma 1/PLC-gamma-1 (Y1253) - Images



Western blot analysis of phospho-Phospholipase C gamma 1/PLC-gamma-1 (Y1253) expression in Jurkat treated with Pervanadate lysate.