

**TSPAN2 Antibody (Center)**  
**Affinity Purified Rabbit Polyclonal Antibody (Pab)**  
**Catalog # AP9321c**

**Specification**

---

**TSPAN2 Antibody (Center) - Product Information**

Application	FC, WB,E
Primary Accession	<a href="#">O60636</a>
Reactivity	Human
Host	Rabbit
Clonality	Polyclonal
Isotype	Rabbit IgG
Calculated MW	24148
Antigen Region	109-137

**TSPAN2 Antibody (Center) - Additional Information**

**Gene ID** 10100

**Other Names**

Tetraspanin-2, Tspan-2, Tetraspan NET-3, TSPAN2

**Target/Specificity**

This TSPAN2 antibody is generated from rabbits immunized with a KLH conjugated synthetic peptide between 109-137 amino acids from the Central region of human TSPAN2.

**Dilution**

FC~~1:10~50

WB~~1:1000

E~~Use at an assay dependent concentration.

**Format**

Purified polyclonal antibody supplied in PBS with 0.09% (W/V) sodium azide. This antibody is purified through a protein A column, followed by peptide affinity purification.

**Storage**

Maintain refrigerated at 2-8°C for up to 2 weeks. For long term storage store at -20°C in small aliquots to prevent freeze-thaw cycles.

**Precautions**

TSPAN2 Antibody (Center) is for research use only and not for use in diagnostic or therapeutic procedures.

**TSPAN2 Antibody (Center) - Protein Information**

**Name** TSPAN2

**Function** May play a role in signalling in oligodendrocytes in the early stages of their terminal

differentiation into myelin-forming glia and may also function in stabilizing the mature sheath.

### Cellular Location

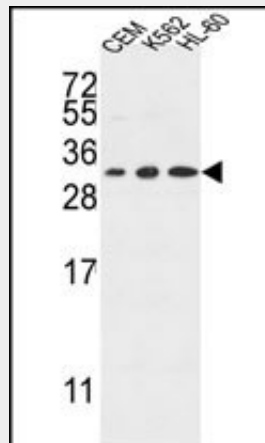
Membrane; Multi-pass membrane protein

### TSPAN2 Antibody (Center) - Protocols

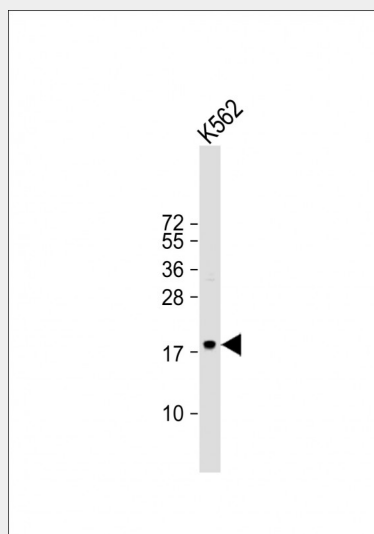
Provided below are standard protocols that you may find useful for product applications.

- [Western Blot](#)
- [Blocking Peptides](#)
- [Dot Blot](#)
- [Immunohistochemistry](#)
- [Immunofluorescence](#)
- [Immunoprecipitation](#)
- [Flow Cytometry](#)
- [Cell Culture](#)

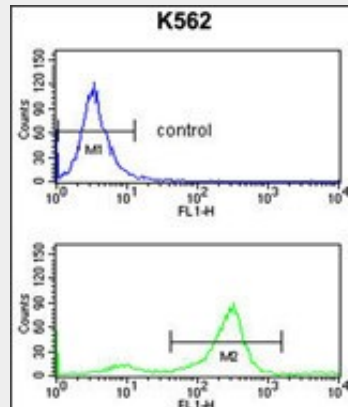
### TSPAN2 Antibody (Center) - Images



TSPAN2 Antibody (Center) (Cat. #AP9321c) western blot analysis in CEM, K562, HL-60 cell line lysates (35ug/lane). This demonstrates the TSPAN2 antibody detected the TSPAN2 protein (arrow).



Anti-TSPAN2 Antibody (Center) at 1:1000 dilution + K562 whole cell lysate Lysates/proteins at 20 µg per lane. Secondary Goat Anti-Rabbit IgG, (H+L), Peroxidase conjugated at 1/10000 dilution. Predicted band size : 24 kDa Blocking/Dilution buffer: 5% NFDM/TBST.



TSPAN2 Antibody (Center) (Cat. #AP9321c) flow cytometry analysis of K562 cells (bottom histogram) compared to a negative control cell (top histogram). FITC-conjugated goat-anti-rabbit secondary antibodies were used for the analysis.

#### **TSPAN2 Antibody (Center) - Background**

TSPAN2 is a member of the transmembrane 4 superfamily, also known as the tetraspanin family. Most of these members are cell-surface proteins that are characterized by the presence of four hydrophobic domains. The proteins mediate signal transduction events that play a role in the regulation of cell development, activation, growth and motility.

#### **TSPAN2 Antibody (Center) - References**

- Davila, S., et al., Genes Immun. 11 (3), 232-238 (2010)
- Hemler, M.E. J. Cell Biol. 155 (7), 1103-1107 (2001)
- Berditchevski, F. J. Cell. Sci. 114 (PT 23), 4143-4151 (2001)