

ENTPD2 Antibody (N-term)
Affinity Purified Rabbit Polyclonal Antibody (Pab)
Catalog # AP9325a**Specification**

ENTPD2 Antibody (N-term) - Product Information

Application	WB, IHC-P, FC,E
Primary Accession	O9Y5L3
Reactivity	Human
Host	Rabbit
Clonality	Polyclonal
Isotype	Rabbit IgG
Antigen Region	86-113

ENTPD2 Antibody (N-term) - Additional Information**Gene ID** 954**Other Names**

Ectonucleoside triphosphate diphosphohydrolase 2, NTPDase 2, 361-, CD39 antigen-like 1, Ecto-ATP diphosphohydrolase 2, Ecto-ATPDase 2, Ecto-ATPase 2, ENTPD2, CD39L1

Target/Specificity

This ENTPD2 antibody is generated from rabbits immunized with a KLH conjugated synthetic peptide between 86-113 amino acids from the N-terminal region of human ENTPD2.

Dilution

WB~~1:2000
IHC-P~~1:50~100
FC~~1:25
E~~Use at an assay dependent concentration.

Format

Purified polyclonal antibody supplied in PBS with 0.09% (W/V) sodium azide. This antibody is purified through a protein A column, followed by peptide affinity purification.

Storage

Maintain refrigerated at 2-8°C for up to 2 weeks. For long term storage store at -20°C in small aliquots to prevent freeze-thaw cycles.

Precautions

ENTPD2 Antibody (N-term) is for research use only and not for use in diagnostic or therapeutic procedures.

ENTPD2 Antibody (N-term) - Protein Information**Name** ENTPD2

Synonyms CD39L1

Function In the nervous system, could hydrolyze ATP and other nucleotides to regulate purinergic neurotransmission. Hydrolyzes ADP only to a marginal extent. The order of activity with different substrates is ATP > GTP > CTP = ITP > UTP >> ADP = UDP.

Cellular Location

[Isoform Long]: Cell membrane; Multi-pass membrane protein [Isoform gamma]: Endoplasmic reticulum membrane; Multi-pass membrane protein

Tissue Location

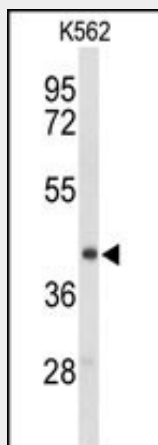
Brain, placenta, skeletal muscle, kidney, pancreas, heart, ovary, testis, colon, small intestine, prostate and pancreas. No expression in adult thymus, spleen, lung, liver and peripheral blood leukocytes

ENTPD2 Antibody (N-term) - Protocols

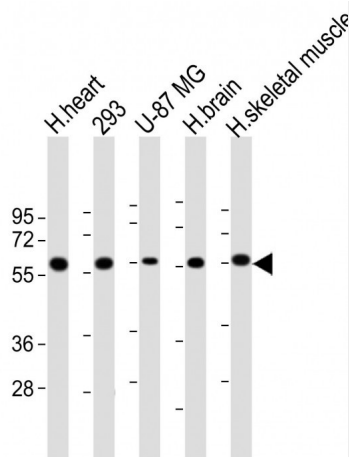
Provided below are standard protocols that you may find useful for product applications.

- [Western Blot](#)
- [Blocking Peptides](#)
- [Dot Blot](#)
- [Immunohistochemistry](#)
- [Immunofluorescence](#)
- [Immunoprecipitation](#)
- [Flow Cytometry](#)
- [Cell Culture](#)

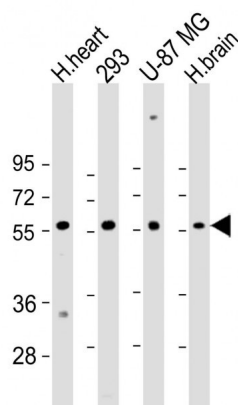
ENTPD2 Antibody (N-term) - Images



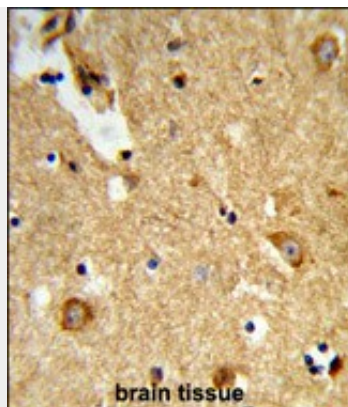
Western blot analysis of ENTPD2 Antibody (N-term) (Cat. #AP9325a) in K562 cell line lysates (35ug/lane). ENTPD2 (arrow) was detected using the purified Pab.



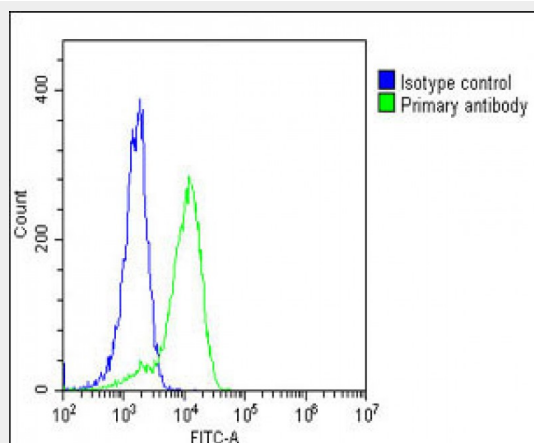
All lanes : Anti-ENTPD2 Antibody at 1:1000 dilution Lane 1: human heart lysate Lane 2: 293 whole cell lysate Lane 3: U-87 MG whole cell lysate Lane 4: human brain lysate Lane 5: human skeletal muscle lysate Lysates/proteins at 20 µg per lane. Secondary Goat Anti-Rabbit IgG, (H+L), Peroxidase conjugated at 1/10000 dilution. Predicted band size : 54 kDa Blocking/Dilution buffer: 5% NFDM/TBST.



All lanes : Anti-ENTPD2 Antibody (N-term) at 1:2000 dilution Lane 1: H.heart lysate Lane 2: 293 whole cell lysate Lane 3: U-87 MG whole cell lysate Lane 4: H.brain whole cell lysate Lysates/proteins at 20 µg per lane. Secondary Goat Anti-Rabbit IgG, (H+L), Peroxidase conjugated at 1/10000 dilution. Predicted band size : 54 kDa Blocking/Dilution buffer: 5% NFDM/TBST.



Formalin-fixed and paraffin-embedded human brain tissue reacted with ENTPD2 Antibody (N-term), which was peroxidase-conjugated to the secondary antibody, followed by DAB staining. This data demonstrates the use of this antibody for immunohistochemistry; clinical relevance has not been evaluated.



Overlay histogram showing K562 cells stained with AP9325a (green line). The cells were fixed with 2% paraformaldehyde (10 min). The cells were then incubated in 2% bovine serum albumin to block non-specific protein-protein interactions followed by the antibody (AP9325a, 1:25 dilution) for 60 min at 37°C. The secondary antibody used was Goat-Anti-Rabbit IgG, DyLight® 488 Conjugated Highly Cross-Adsorbed (OH191631) at 1/200 dilution for 40 min at 37°C. Isotype control antibody (blue line) was rabbit IgG1 (1 µg/1x10⁶ cells) used under the same conditions. Acquisition of >10,000 events was performed.

ENTPD2 Antibody (N-term) - Background

ENTPD2 is the type 2 enzyme of the ecto-nucleoside triphosphate diphosphohydrolase family (E-NTPDase). E-NTPDases are a family of ecto-nucleosidases that hydrolyze 5'-triphosphates. This ecto-ATPase is an integral membrane protein.

ENTPD2 Antibody (N-term) - References

- Chiang, W.C. Biochemistry 47 (33), 8775-8785 (2008)
- Javed, R. Biochemistry 46 (22), 6617-6627 (2007)
- Mukasa, T. Biochemistry 44 (33), 11160-11170 (2005)