

**DMC1 Antibody (N-term)**  
**Affinity Purified Rabbit Polyclonal Antibody (Pab)**  
**Catalog # AP9329a****Specification**

---

**DMC1 Antibody (N-term) - Product Information**

|                   |                        |
|-------------------|------------------------|
| Application       | FC, IHC-P, WB,E        |
| Primary Accession | <a href="#">Q14565</a> |
| Reactivity        | Human                  |
| Host              | Rabbit                 |
| Clonality         | Polyclonal             |
| Isotype           | Rabbit IgG             |
| Calculated MW     | 37681                  |
| Antigen Region    | 1-30                   |

**DMC1 Antibody (N-term) - Additional Information****Gene ID** 11144**Other Names**

Meiotic recombination protein DMC1/LIM15 homolog, DMC1, DMC1H, LIM15

**Target/Specificity**

This DMC1 antibody is generated from rabbits immunized with a KLH conjugated synthetic peptide between 1-30 amino acids from the N-terminal region of human DMC1.

**Dilution**

FC~~1:10~50

IHC-P~~1:50~100

WB~~1:1000

E~~Use at an assay dependent concentration.

**Format**

Purified polyclonal antibody supplied in PBS with 0.09% (W/V) sodium azide. This antibody is purified through a protein A column, followed by peptide affinity purification.

**Storage**

Maintain refrigerated at 2-8°C for up to 2 weeks. For long term storage store at -20°C in small aliquots to prevent freeze-thaw cycles.

**Precautions**

DMC1 Antibody (N-term) is for research use only and not for use in diagnostic or therapeutic procedures.

**DMC1 Antibody (N-term) - Protein Information****Name** DMC1

**Synonyms** DMC1H, LIM15

**Function** Participates in meiotic recombination, specifically in homologous strand assimilation, which is required for the resolution of meiotic double-strand breaks.

**Cellular Location**

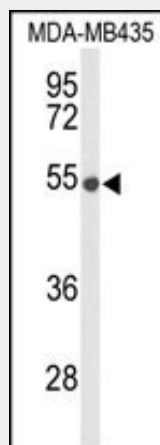
Nucleus. Chromosome {ECO:0000250|UniProtKB:Q61880}

**DMC1 Antibody (N-term) - Protocols**

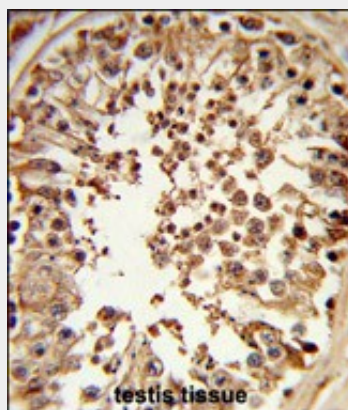
Provided below are standard protocols that you may find useful for product applications.

- [Western Blot](#)
- [Blocking Peptides](#)
- [Dot Blot](#)
- [Immunohistochemistry](#)
- [Immunofluorescence](#)
- [Immunoprecipitation](#)
- [Flow Cytometry](#)
- [Cell Culture](#)

**DMC1 Antibody (N-term) - Images**

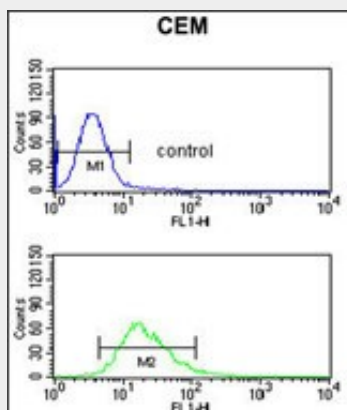


Western blot analysis of DMC1 Antibody (N-term) (Cat. #AP9329a) in MDA-MB435 cell line lysates (35ug/lane). DMC1 (arrow) was detected using the purified Pab.



Formalin-fixed and paraffin-embedded human testis tissue reacted with DMC1 Antibody (N-term),

which was peroxidase-conjugated to the secondary antibody, followed by DAB staining. This data demonstrates the use of this antibody for immunohistochemistry; clinical relevance has not been evaluated.



DMC1 Antibody (N-term) (Cat. #AP9329a) flow cytometric analysis of CEM cells (bottom histogram) compared to a negative control cell (top histogram). FITC-conjugated goat-anti-rabbit secondary antibodies were used for the analysis.

#### **DMC1 Antibody (N-term) - Background**

DMC1 is essential for meiotic homologous recombination. Genetic recombination in meiosis plays an important role in generating diversity of genetic information. The product of this protein is structurally and evolutionary related to the products of the yeast RAD51 and E. coli RecA genes.

#### **DMC1 Antibody (N-term) - References**

- Volodin, A.A. J. Biol. Chem. 284 (3), 1495-1504 (2009)
- Hikiba, J. FEBS J. 276 (2), 457-465 (2009)
- Hikiba, J. Nucleic Acids Res. 36 (12), 4181-4190 (2008)